

Co-funded by the
Erasmus+ Programme
of the European Union



Retraining program for academic teachers:

«New Courses in Geospatial Engineering for Climate Change Adaptation of Coastal Ecosystems / GEOCLIC»

About Murighiol - presentation, information and photos

City Murighiol is attractive for those who spend their vacations in the Delta. Murighiol town with a rich history that comes from the ancient hearth of the village were present when the Black Sea port, and the old Danubiu, enjoy some advantages they have only a few Romanian localities.

Two steps from the village opens kingdom of Delta waters. Murighiol Razelm Lakes and surrounds the city, and the cobweb of canals around these lakes can get into areas of the wildest and picturesque Danube Delta Biosphere Reserved. Besides the lush landscape of water specific provinces, which constitute an irresistible attraction for nature lovers, MURIGHIOL has the advantage of being accessible to tourists who do not have enough time to vacation.

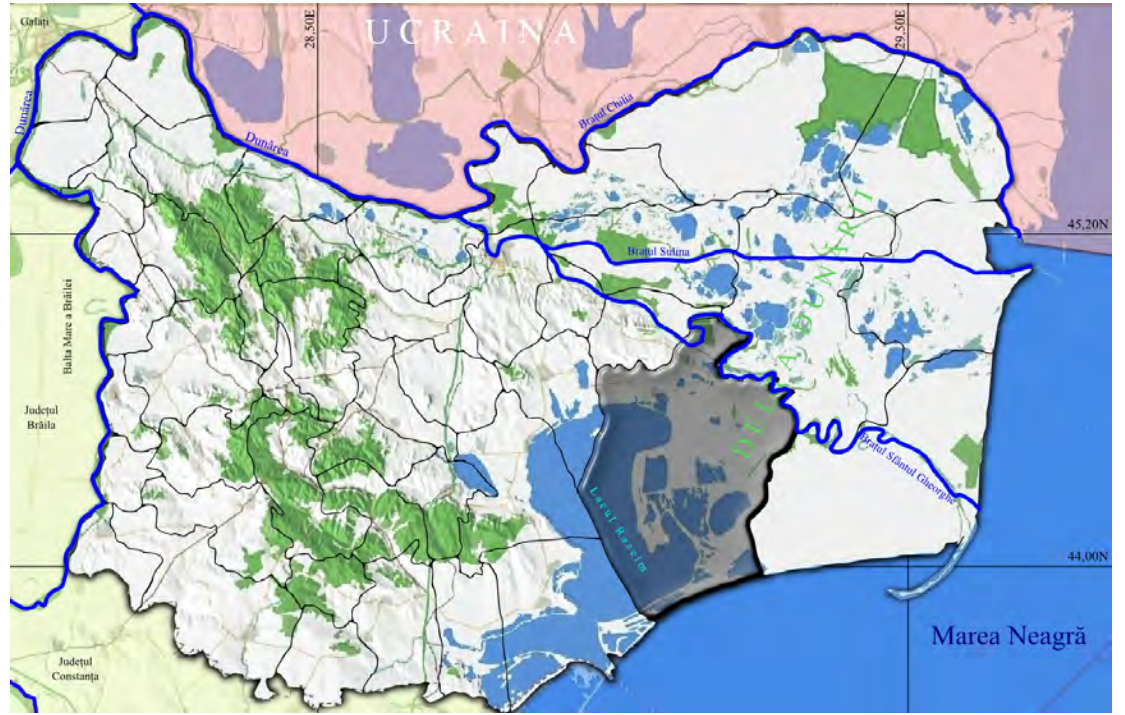
Murighiol arrive in Tulcea on a county road about 50 km that runs parallel with St. George's River. Thus, in Bucharest and the seaside can be reached in two steps from the heart of the Delta, Murighiol in 4-5 hours, compared to the way that tourists would be difficult to go through with another boat to visit the picturesque Inside the Delta.

Murighiol, a traditional fishing village, is home to the ruined Roman city of Halmyris, one of the most important ancient sites in Romania. Although a basilica and a crypt containing the tomb of Epictet and Astion, the earliest Romanian Christian martyrs, have been discovered here, much of the ruins remain unexcavated. A visit offers the chance to see an ancient city still in the process of being uncovered.

Murighiol is the jump-off point for boats to Uzlina. Located 24 miles east of Tulcea, Uzlina is home to the offices of the Danube Delta Biosphere Reserve and the Jacques Cousteau Foundation.

City

Murighiol





ARCHAEOLOGICAL SITE OF HALMYRIS





by almost

