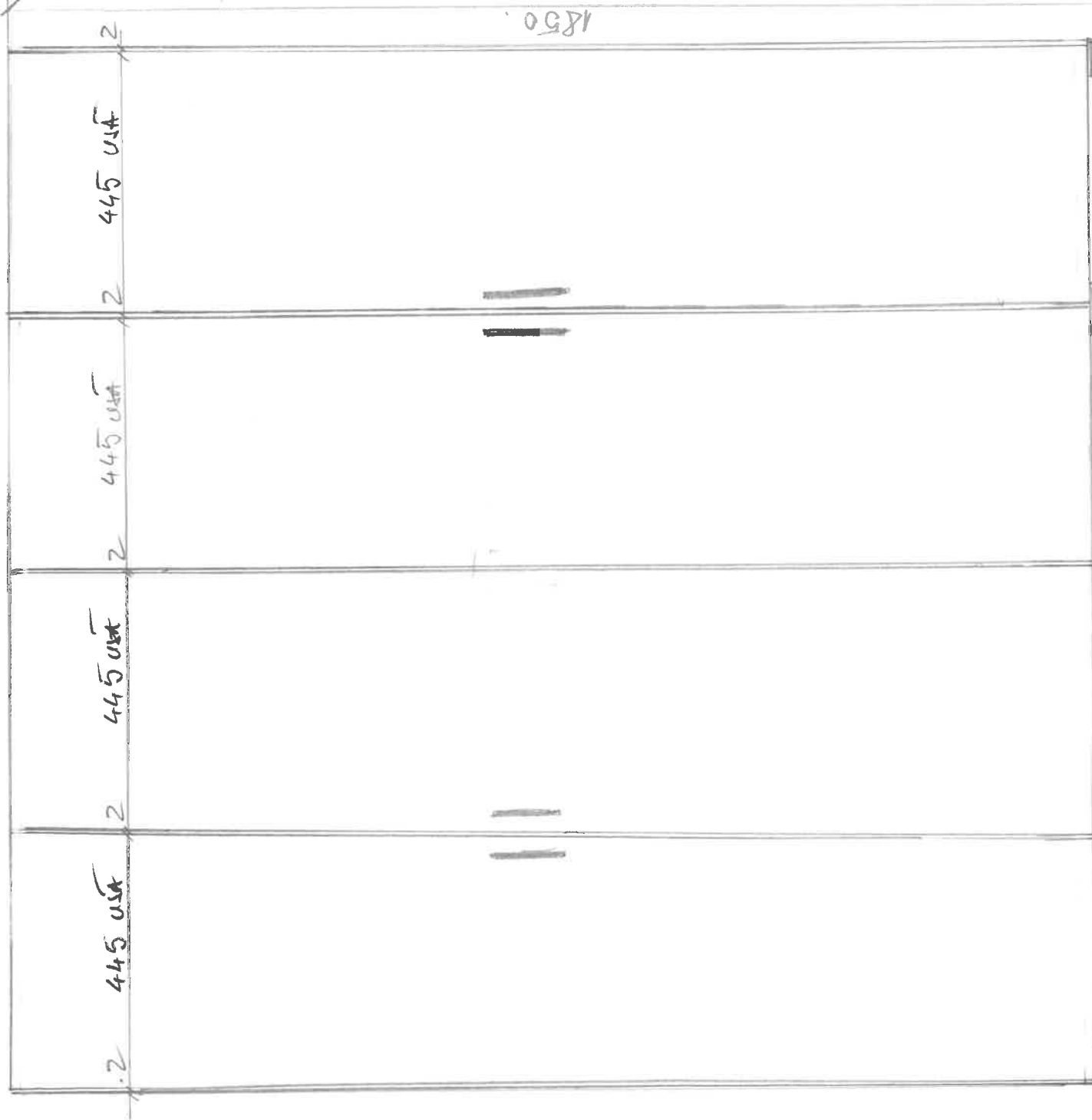


① DULAR HAINI 4x8 PLINE  
CAMERA TAMINI - 15 HANC

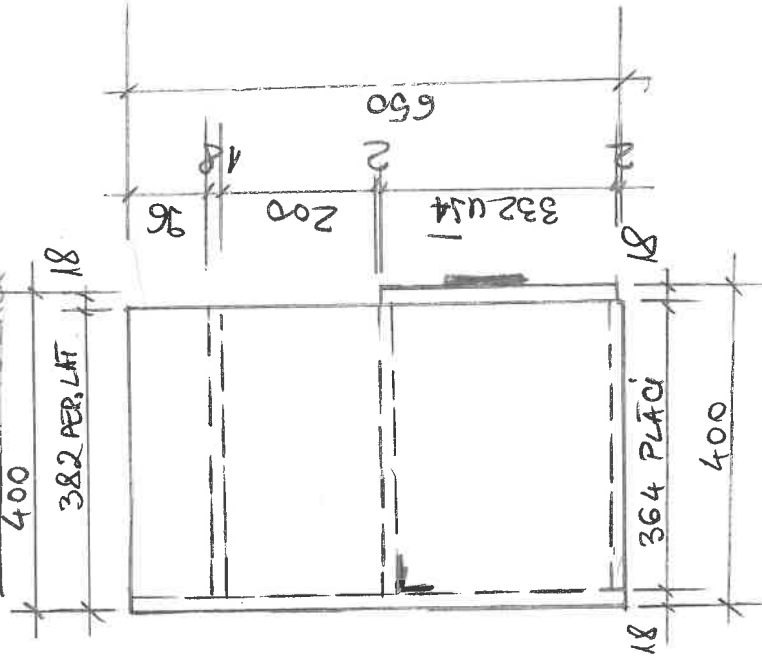


1790



NEARBY WATERWAY  
400

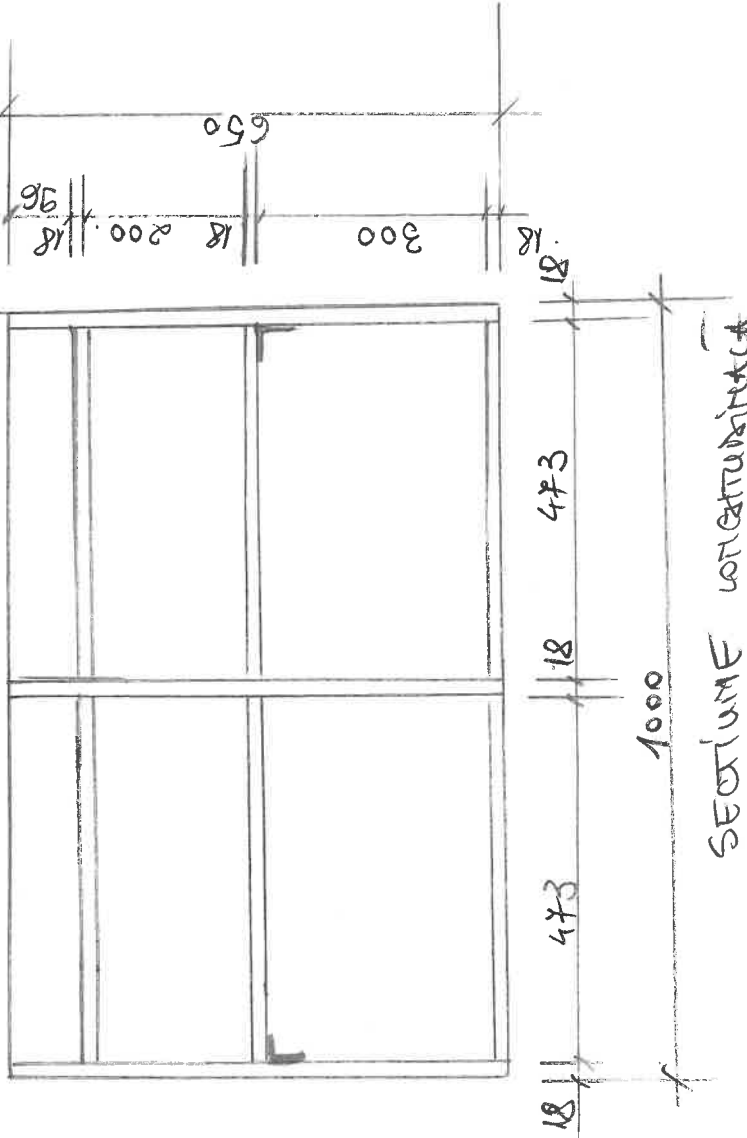
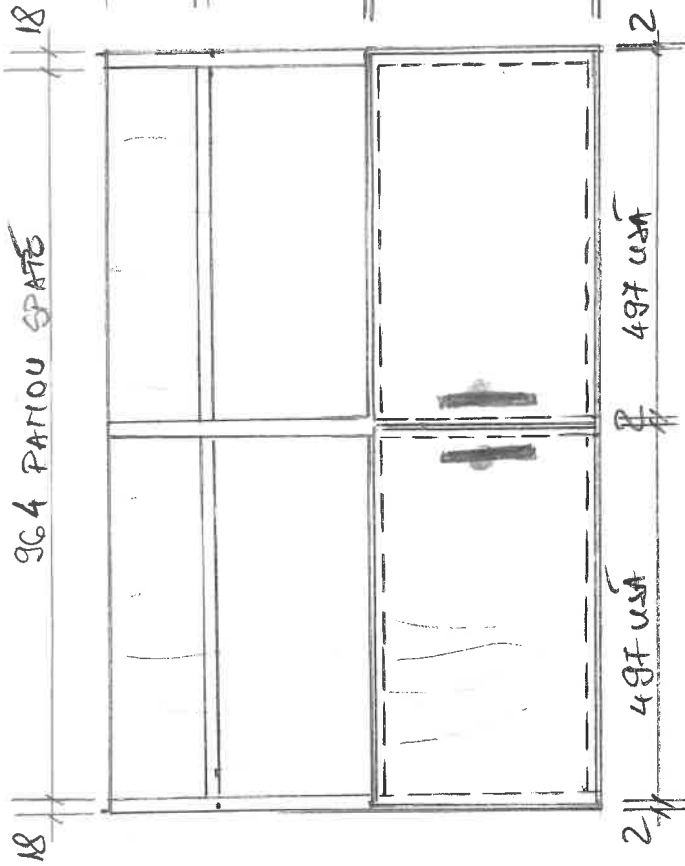
382 PER. LFT



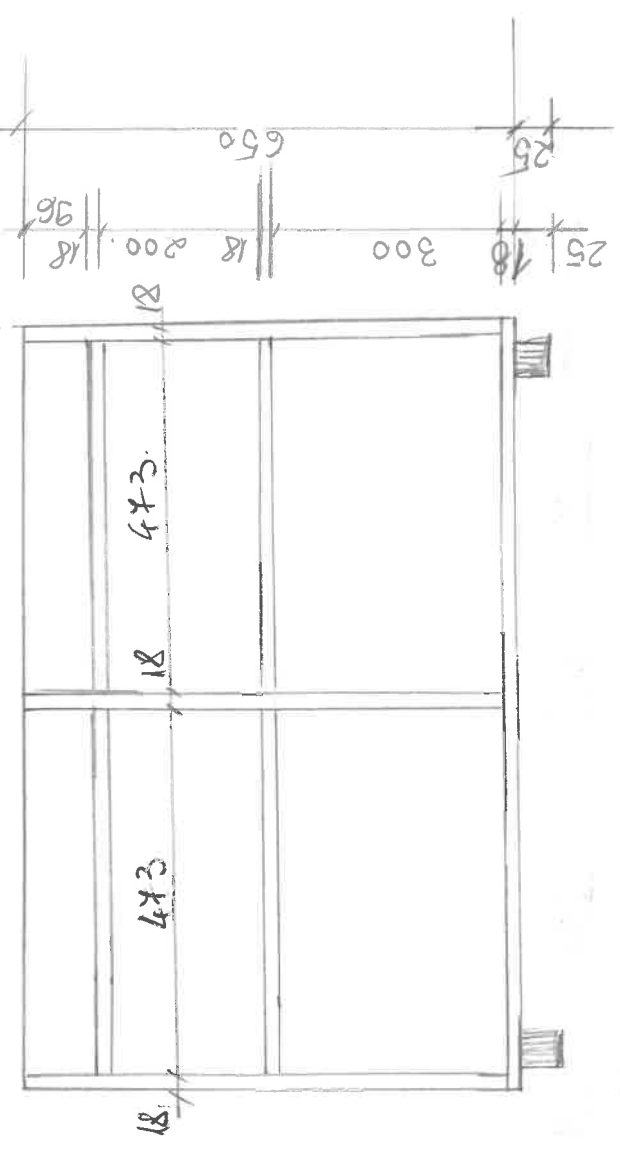
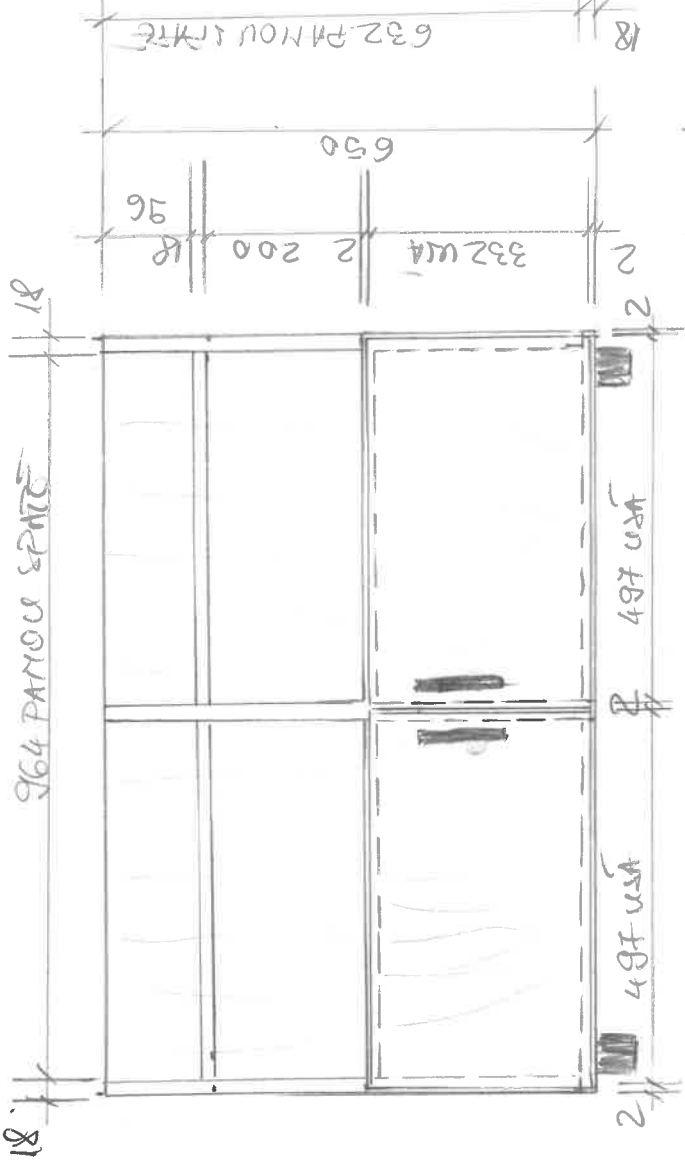
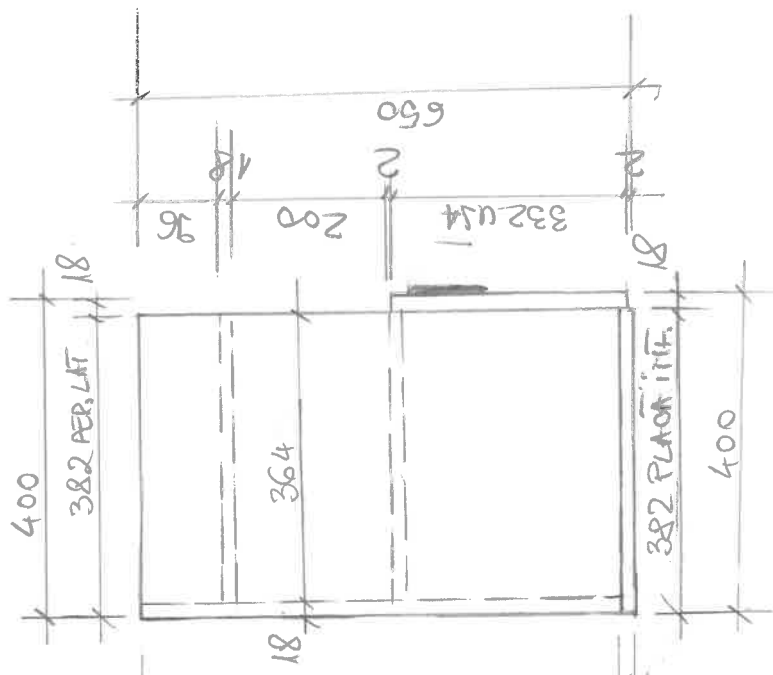
② CORP SUSPENSION - CAMERA GANTRY

15 tone

364 PATIOW SPATE



SECTIONME LONGITUDINALA



③ CORP INFERIOR CORPULUI SUSȚINĂȚII  
 CAMERA CAMIN - 15 bloc

1000

2448 cm

18

464

18

2386 PERTE LATERAL

18

225

2

496 u.s.

500.

18

18.250

18.250

18.250

18.250

18.250

18.250

18.315

18.315

18.315

18.315

18.315

18.18

18.315

18.18

18.315

18.18

18

238 PER. LATERAL 18

260.

VEDERE LATERALA

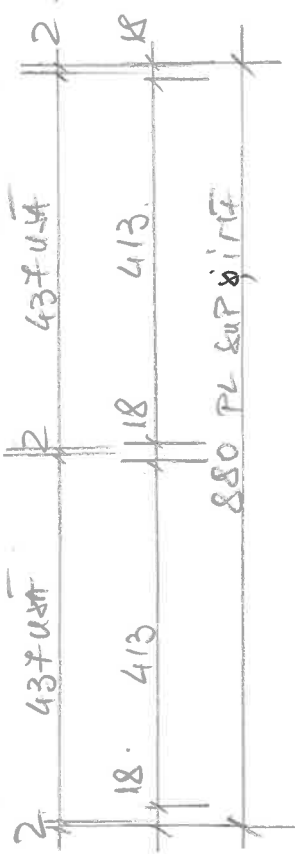
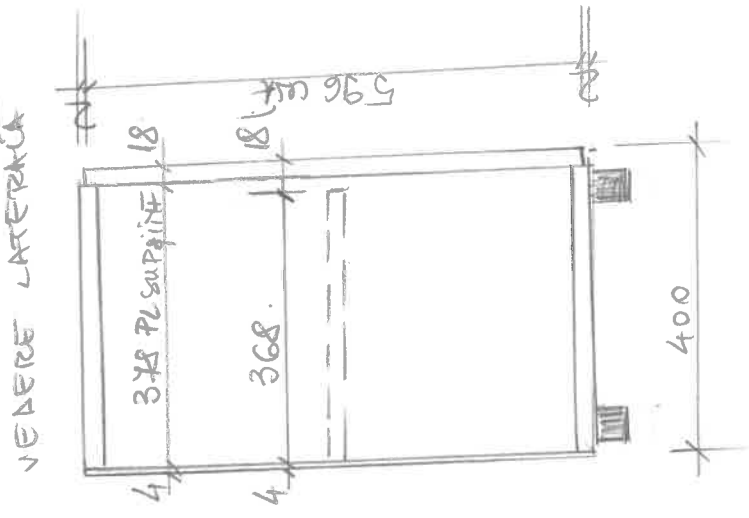
1079 u.s.

1339

④ DULAP VASE cu 2 u.s.  
CAMERA CAMIN - 15 km

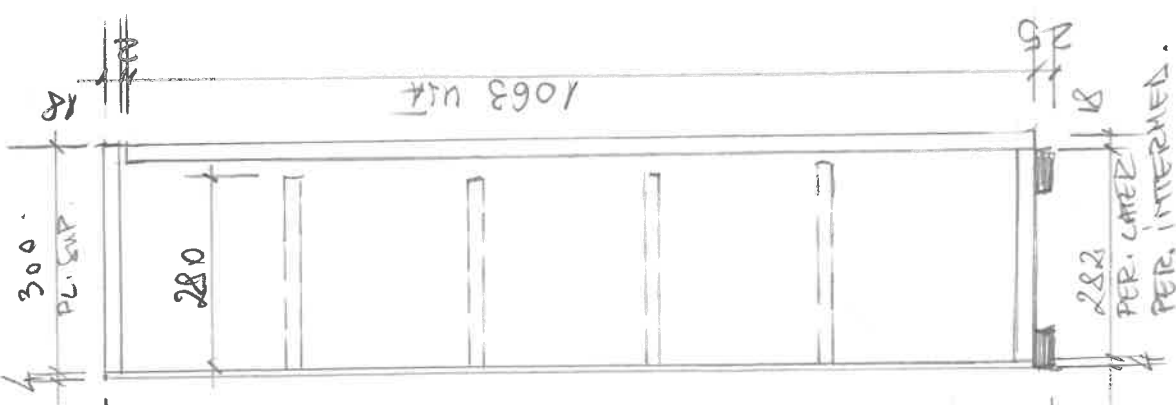
Reg. mod. 19

NEVERE LATERAL



5 DULAP MIC NESELA - CAMERA OAMIN  
15 huc

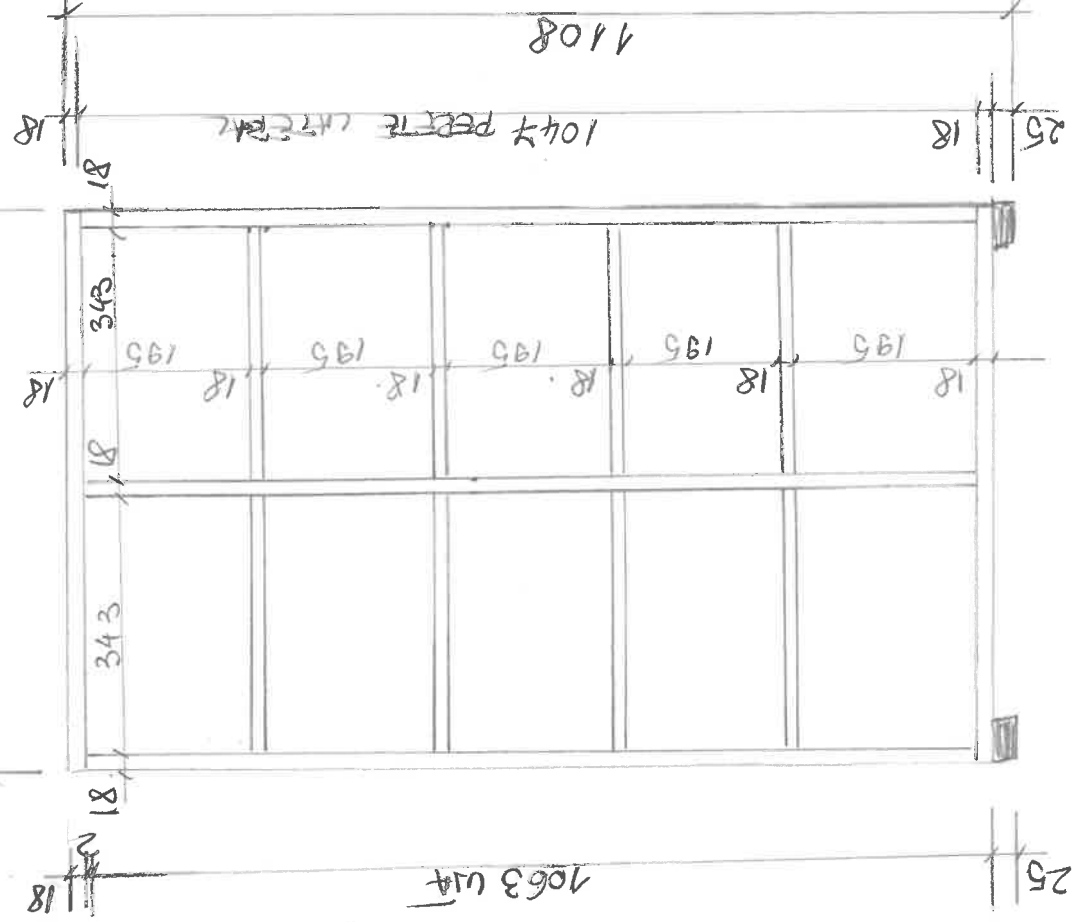
VEREȘTE LATERALĂ



SECȚIUNE

740.

740.



1063 U14

1108

1047 PER. CĂPȘĂ

343

343

1063 U14

2 · 367 U14

2 · 367 U14

PER. CĂPȘĂ  
PER. INTERMED.

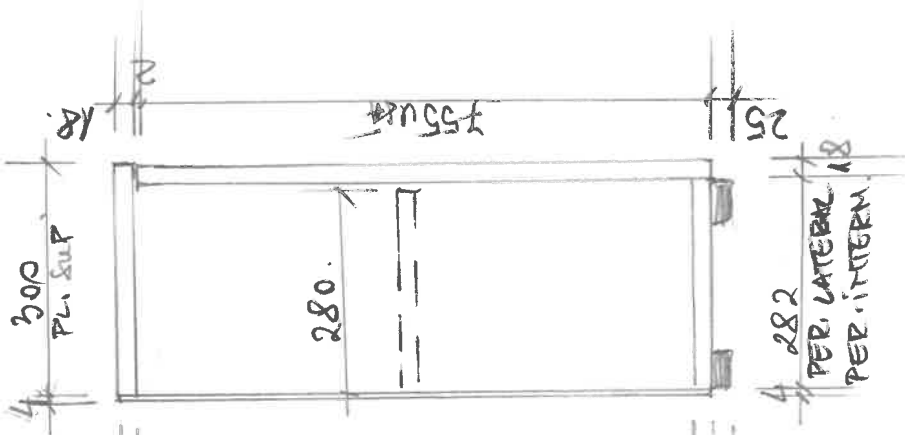
15

15 1040

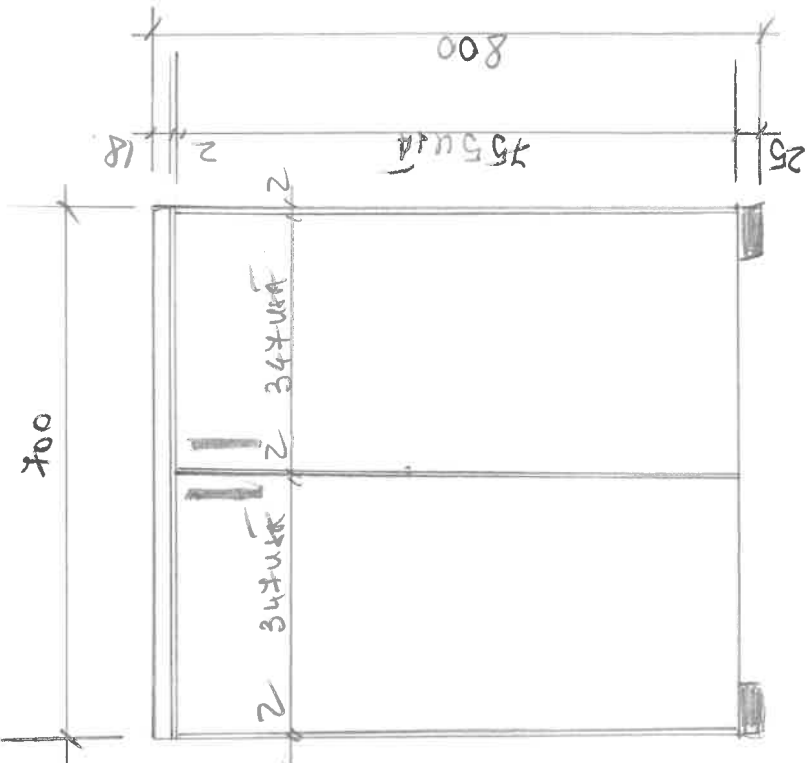
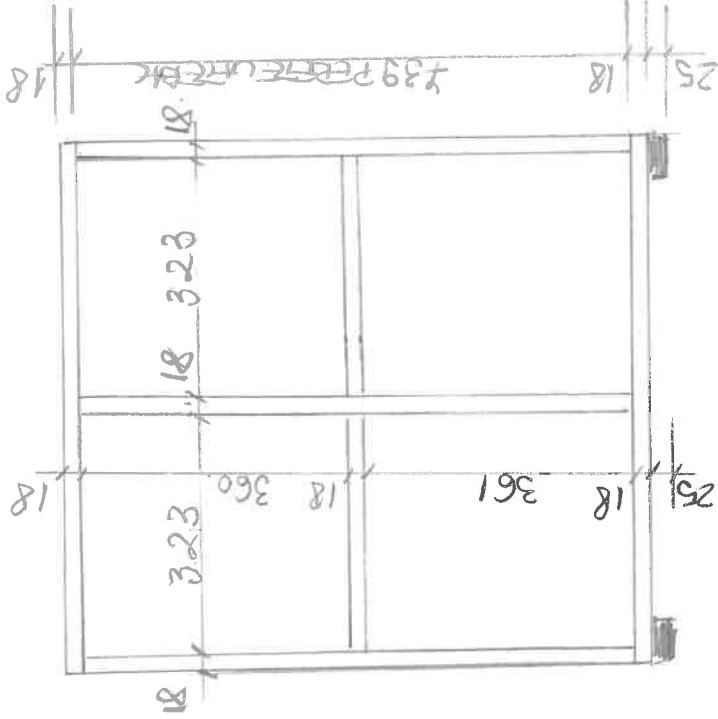
16

PANOFAR MARE - CAMERĂ CĂMIN

VENERE



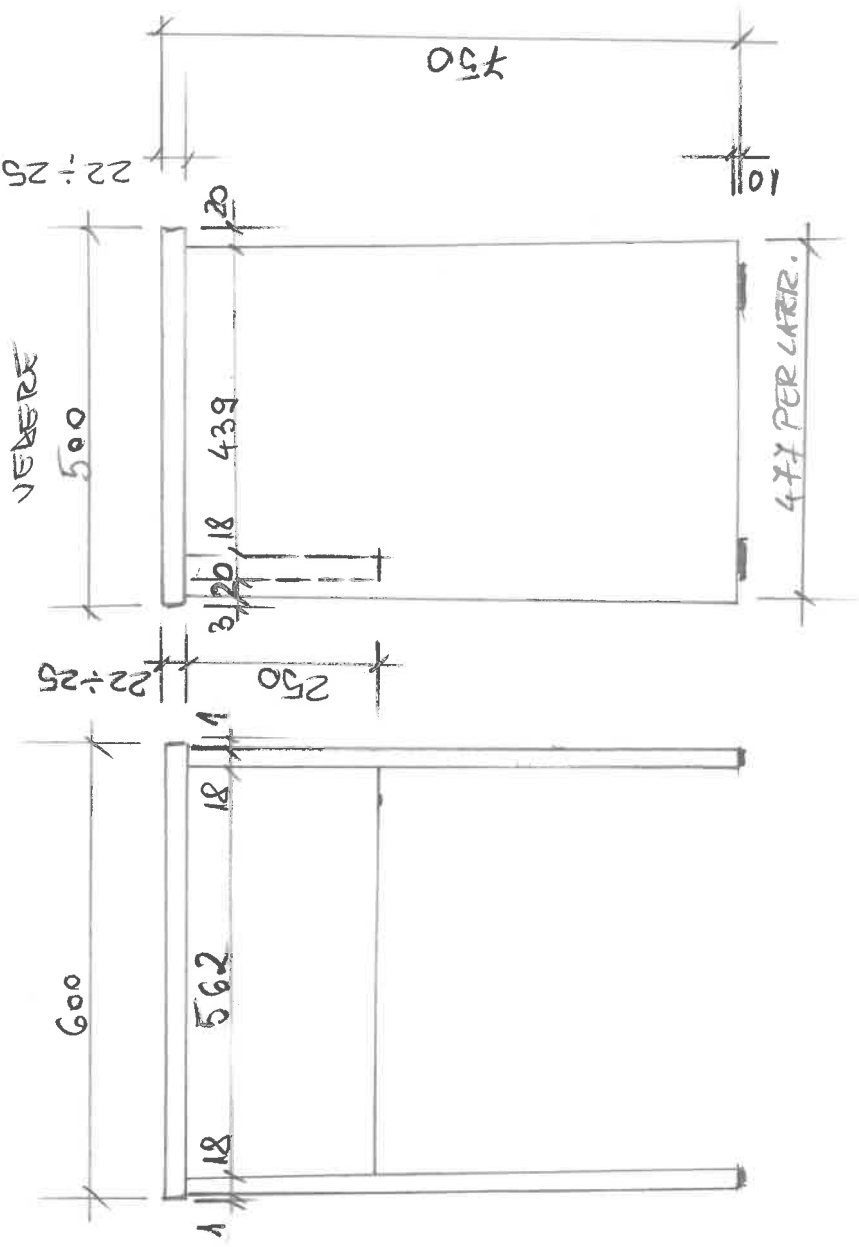
SEZIONE



④ PANTOFAR MIC - CAMERA CAMIN

15 tone





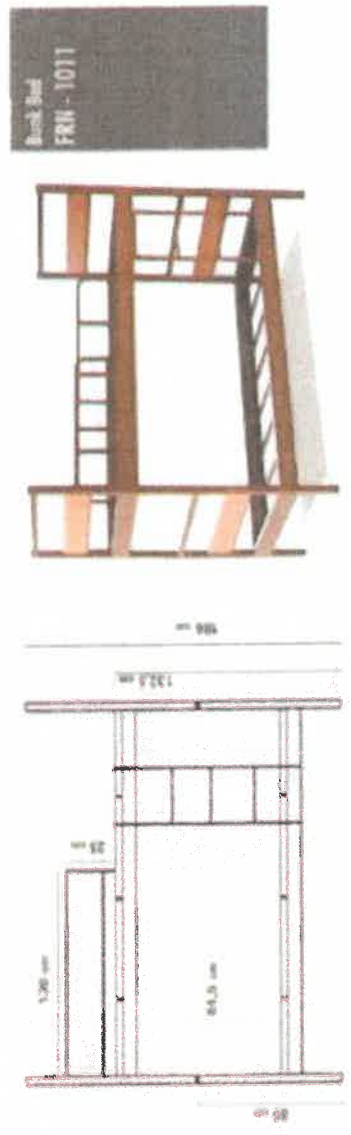
⑧ MASĂ - CAMERA CĂMIN

60 tmc

9) PATURI SUPRĂPULE - CAMERE CĂMIN  
30 SETURI



Pat suprapus pentru camine Yurt

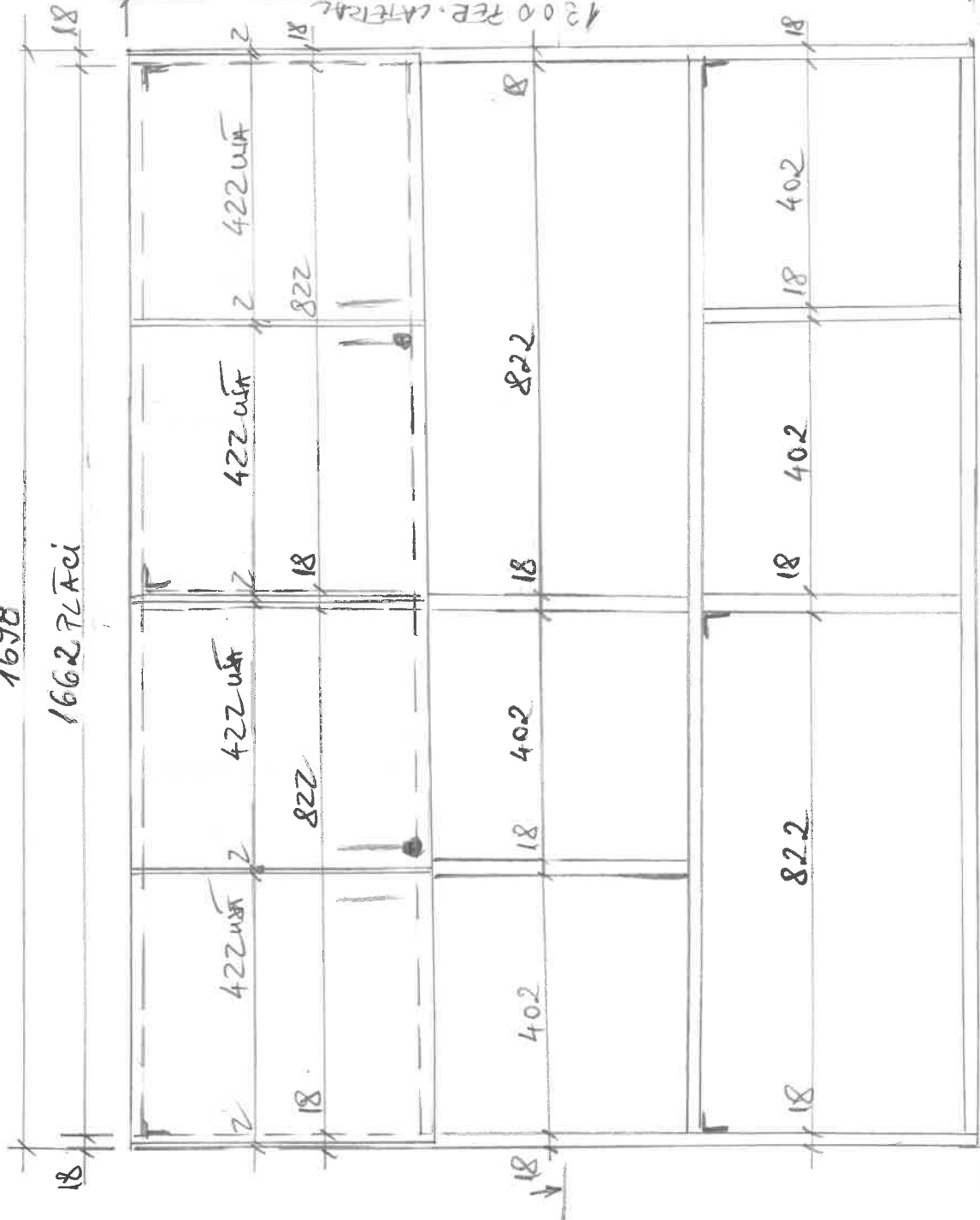


Column (headboard)	Design (Inside or headboard)	Bed Frame Side Bars	Bed Frame Metal Slats	Guard Rail	Ladder
40*40 - 1,60 mm	40*40 - 1,60 mm 18 mm outside - chipboard	12*5 - 1,28 mm chip	20*20 - 1 mm	20*20 - 0,80 mm	20*20 - 0,80 mm

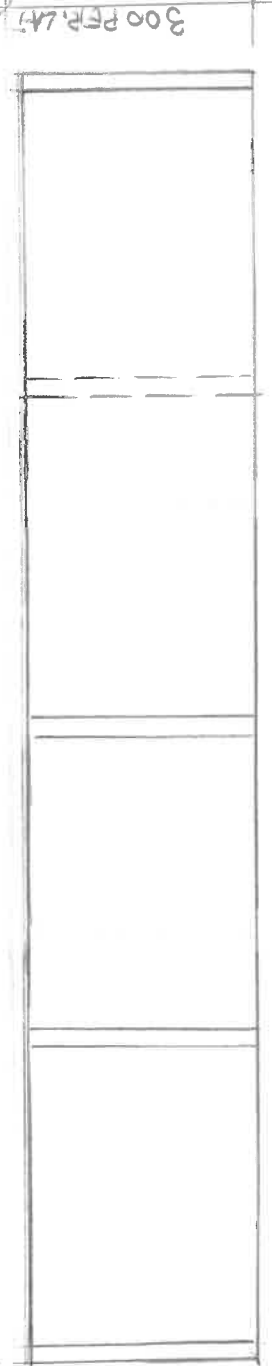
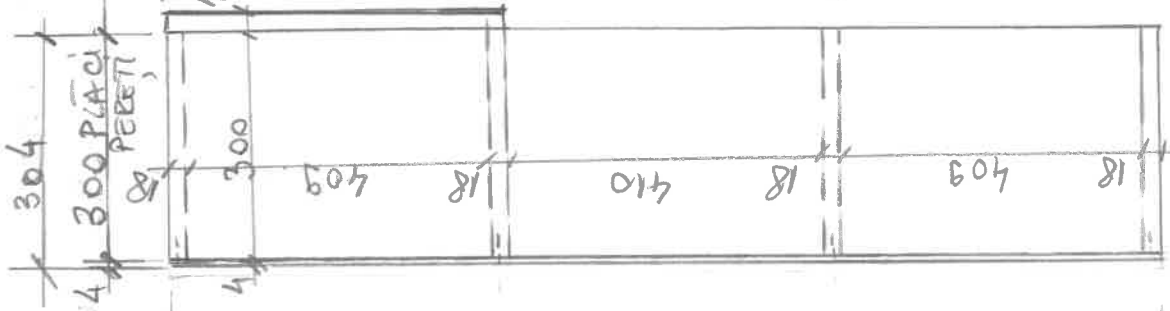
DIMENSION	PIECES	WEIGHT	QTY	VOLUME
90 x 199	2	83,16 kg	174	0,854 m <sup>3</sup>
90 x 200	2	87,10 kg	184	0,860 m <sup>3</sup>

1698

1662 PLĂCI



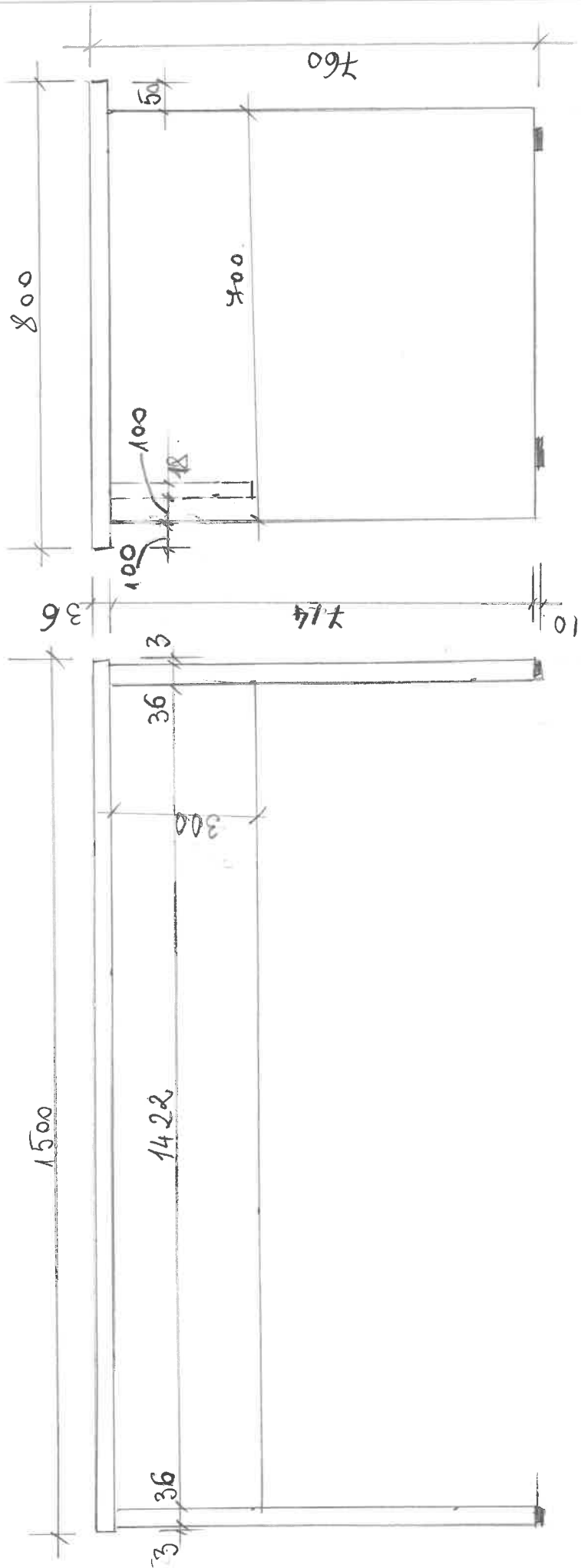
VEZERE



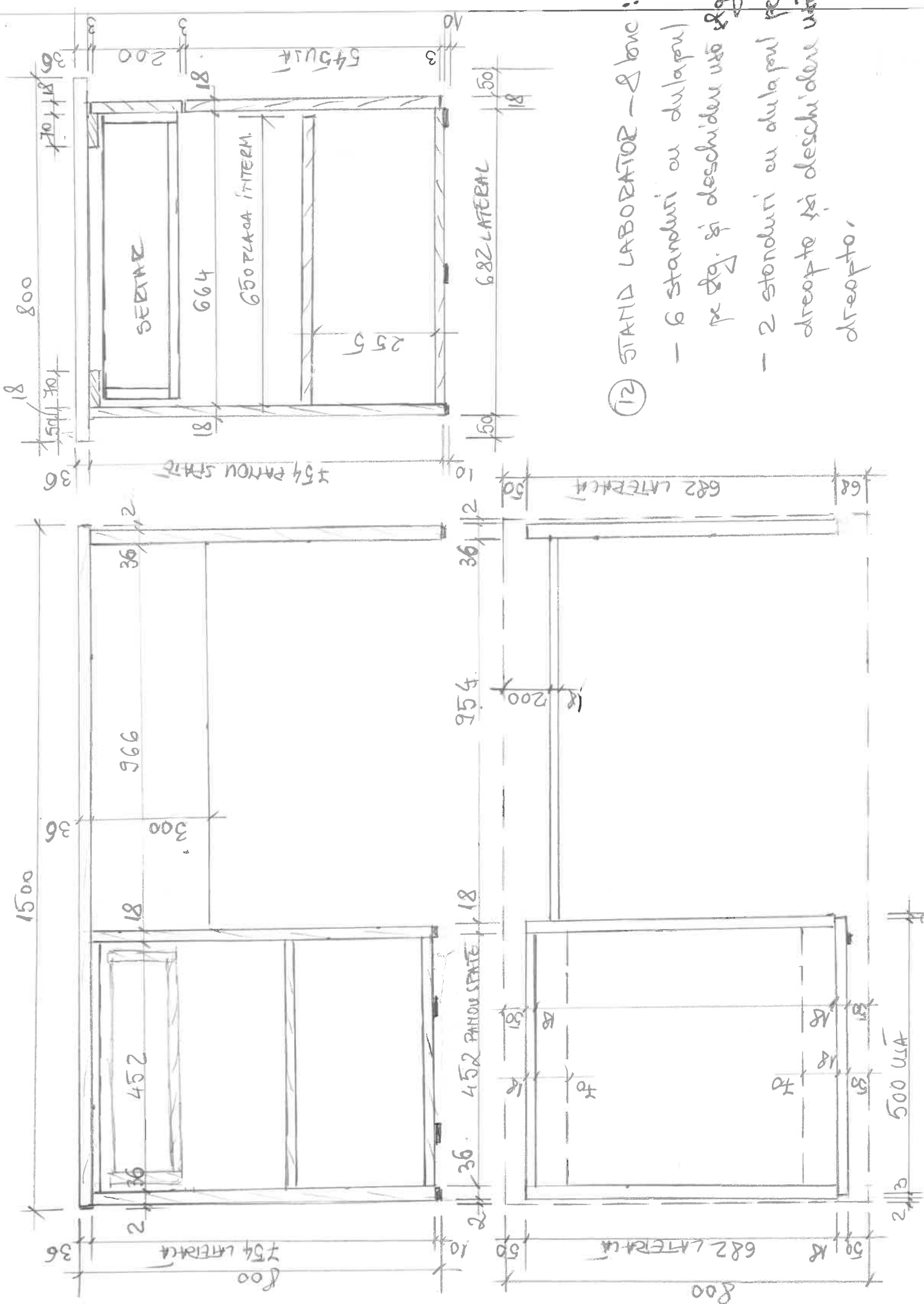
10 CORP SUSPENDAT SACA ROMO

1 tonc

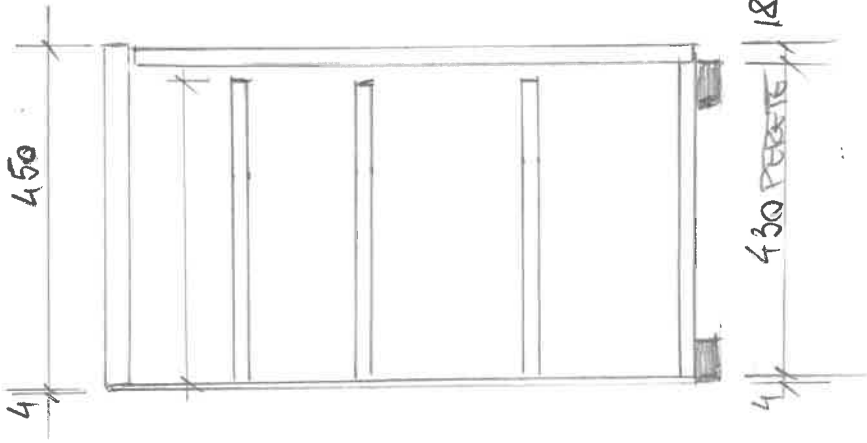
SECȚIUNE PRIN MIZOCUL CORP...



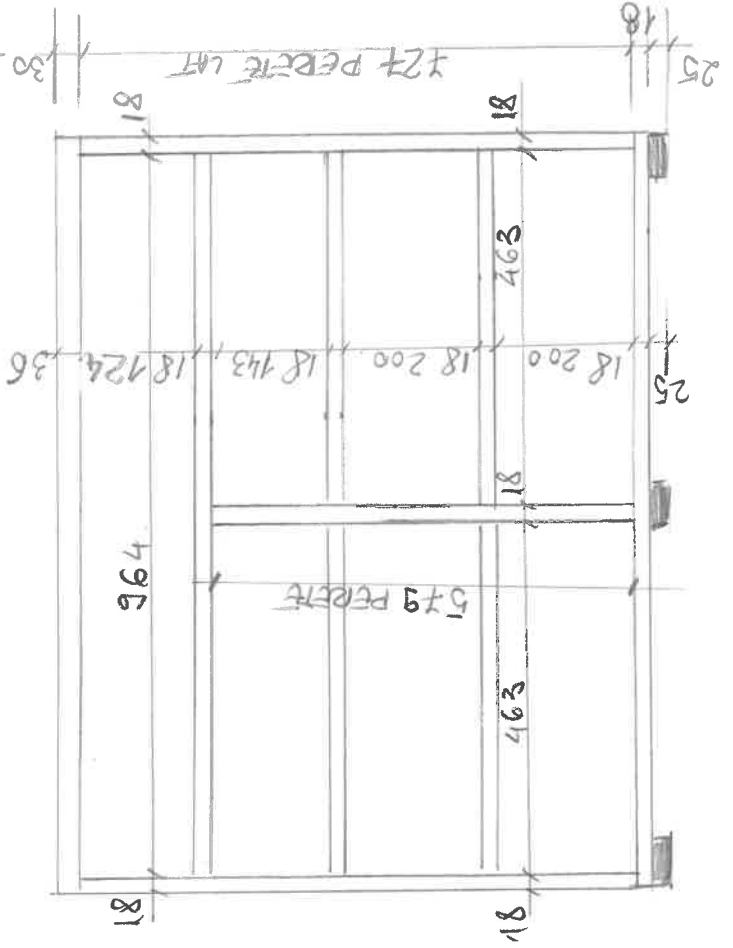
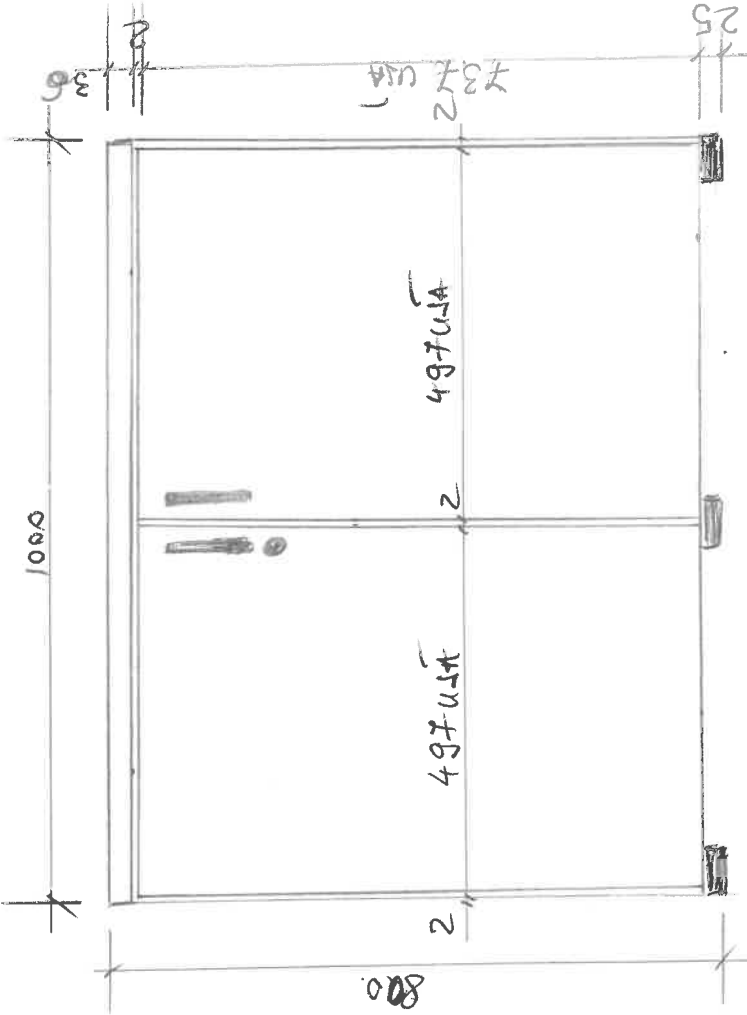
11) BIROU / MASA STUDENŢI - 12 buc

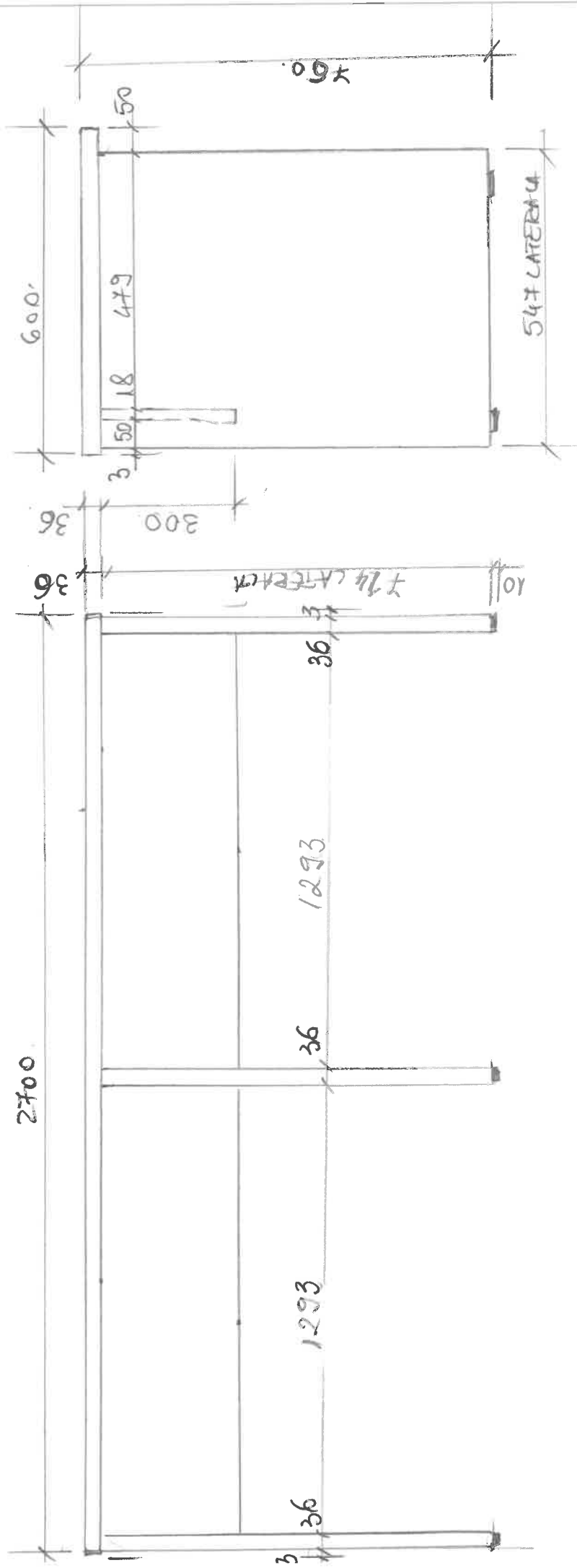


- ⑫ STAND LABORATOR — 2 buc:
- 6 standuri cu dulapul pe stg. și deschidere ușă stg
  - 2 standuri cu dulapul pe dreapta și deschidere ușă dreapta.



13) NULAP DEPOZITARE - 2 bnc



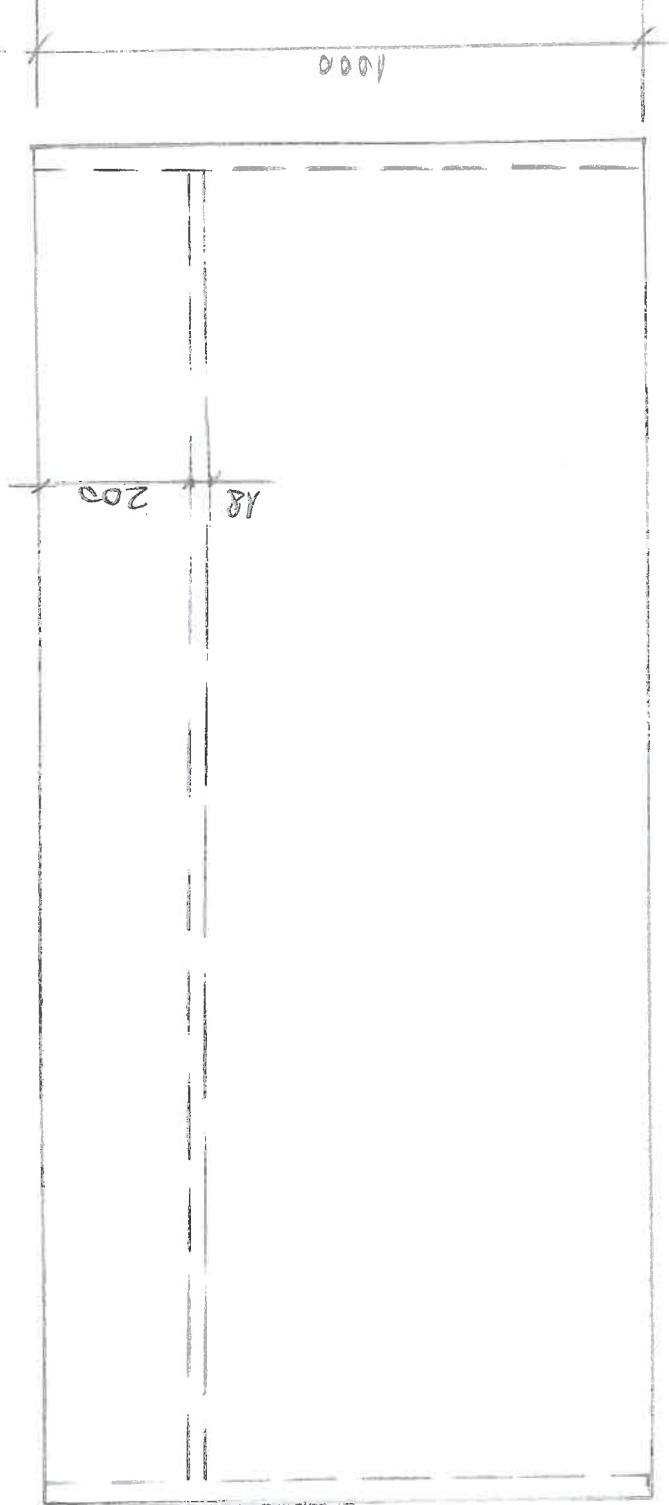
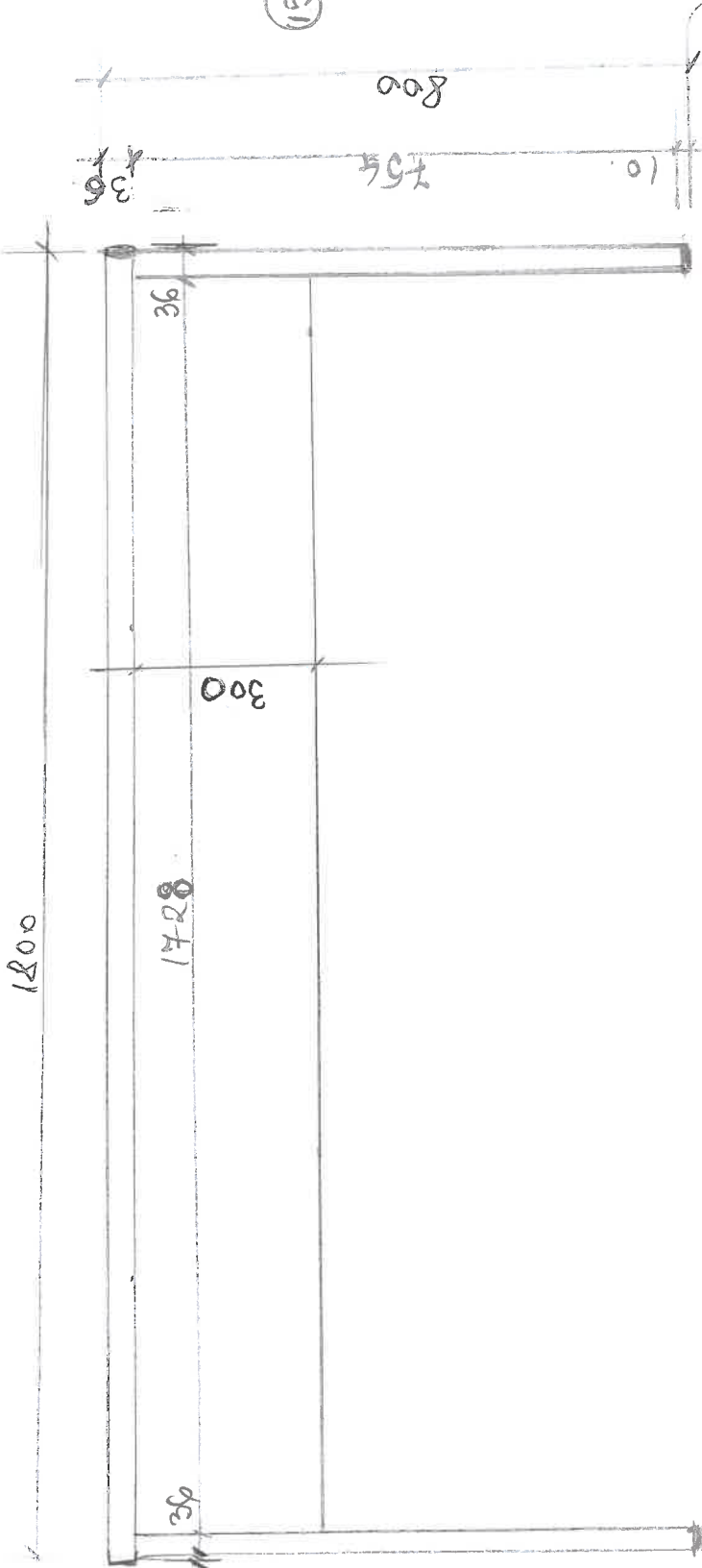


14) MASA STUDENTŃI - 5 boc

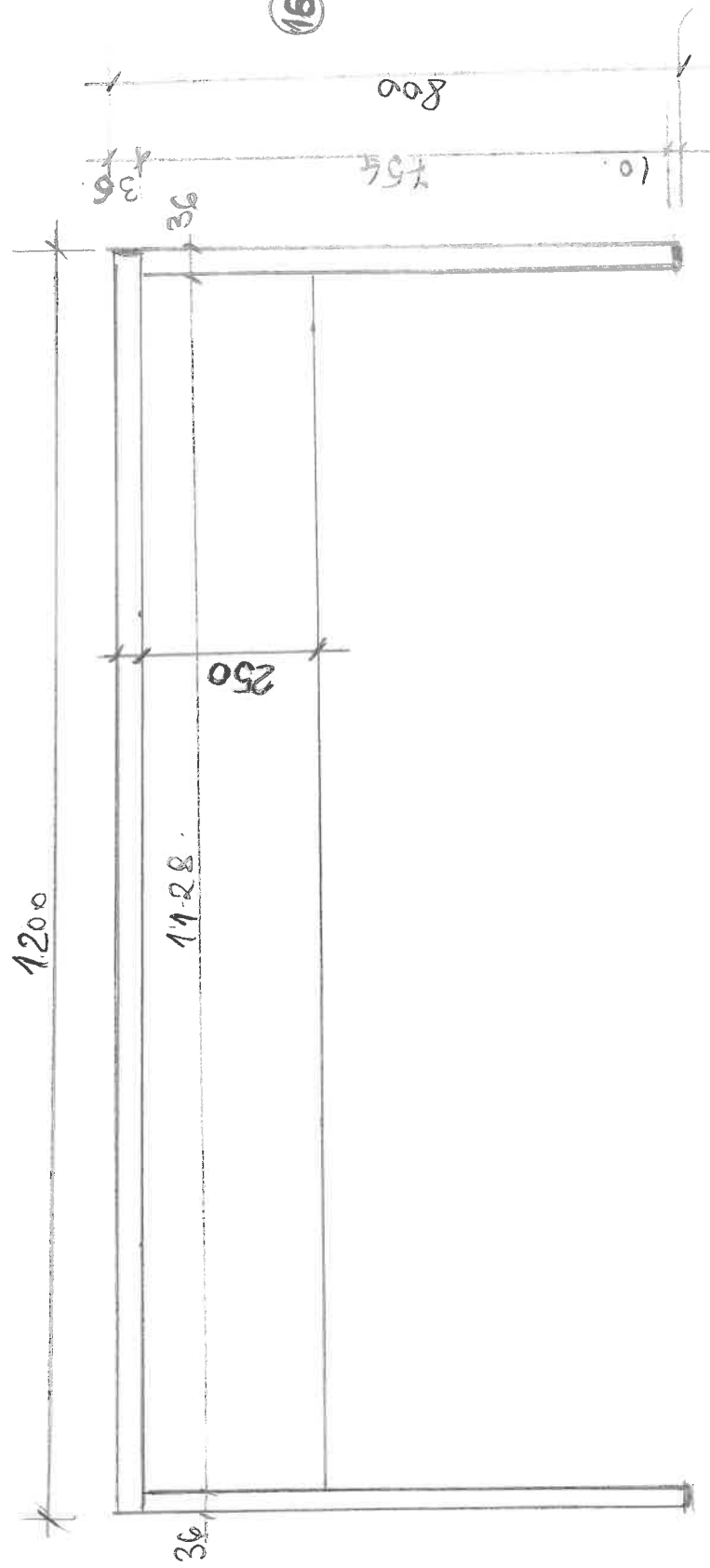


15) MASA STUDENTŪ-8huc

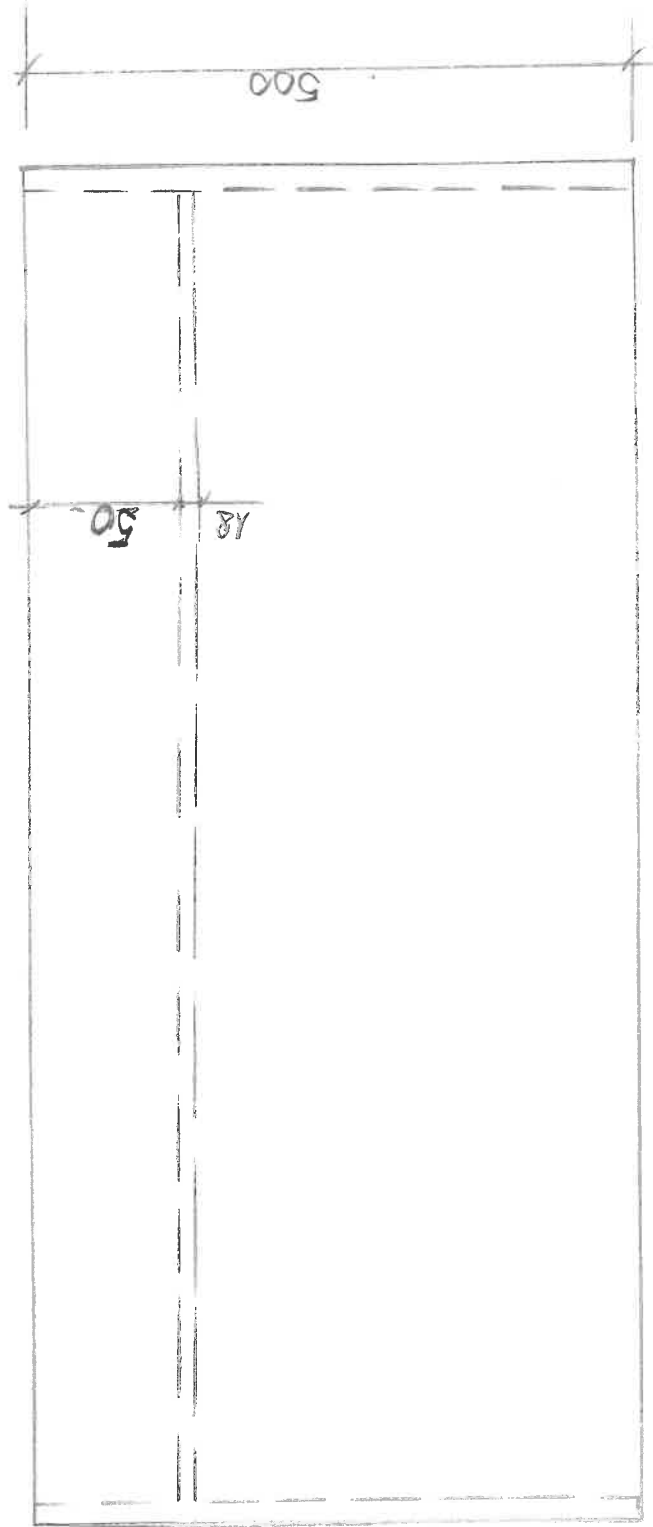
22



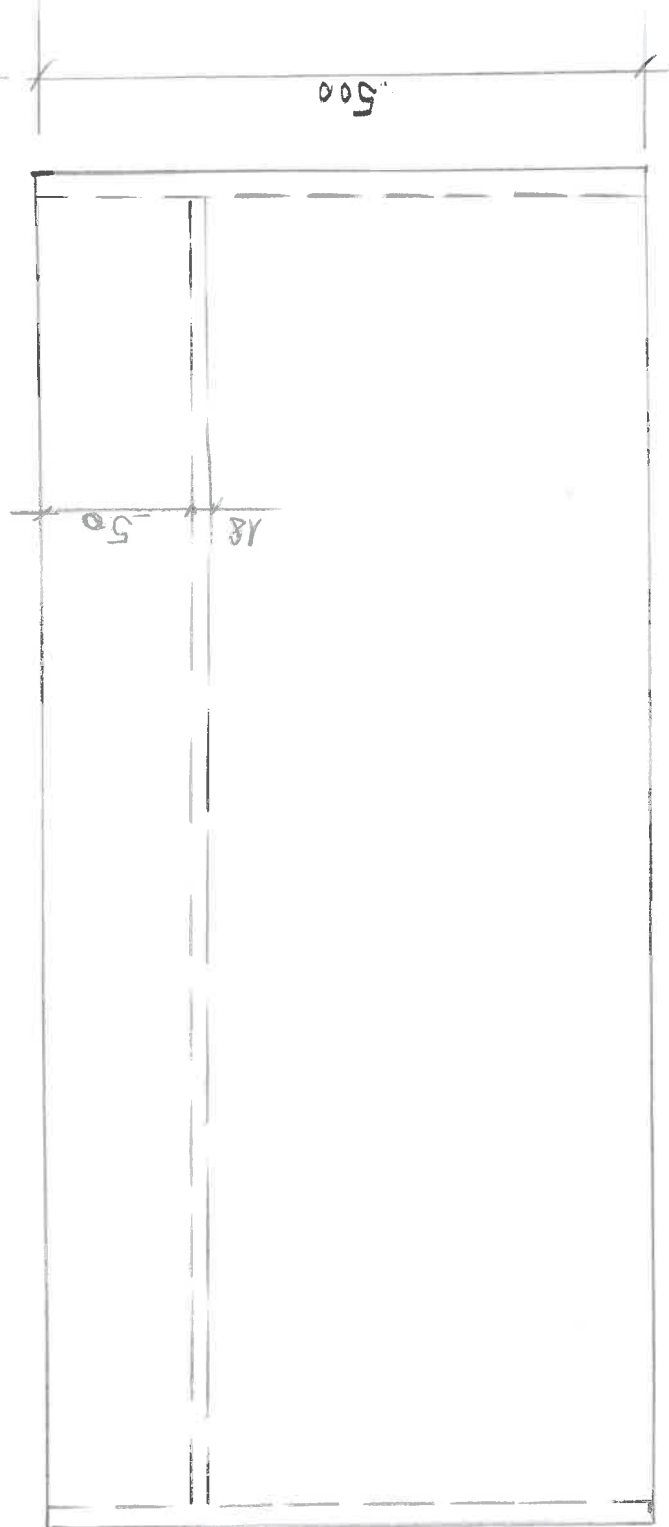
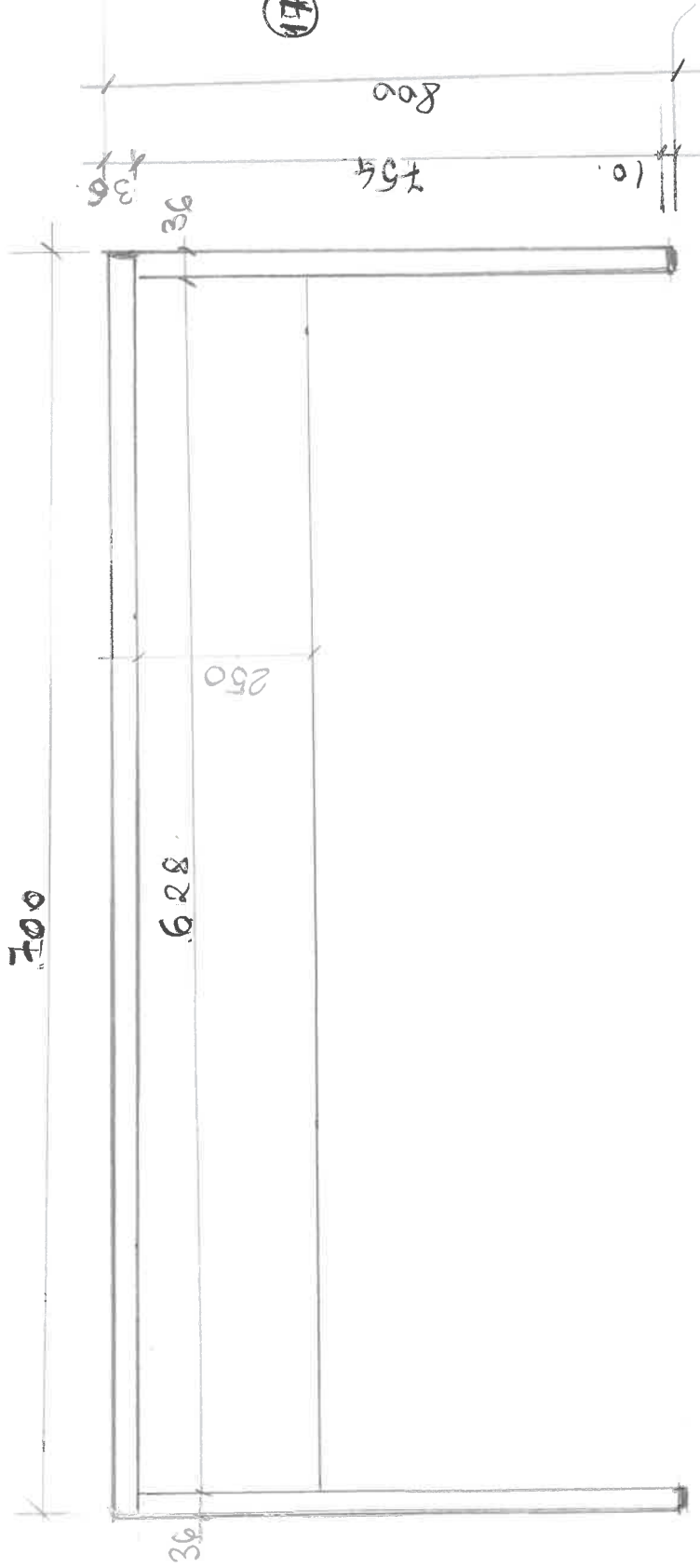
32



16 MASA STUDENT 6 hmc

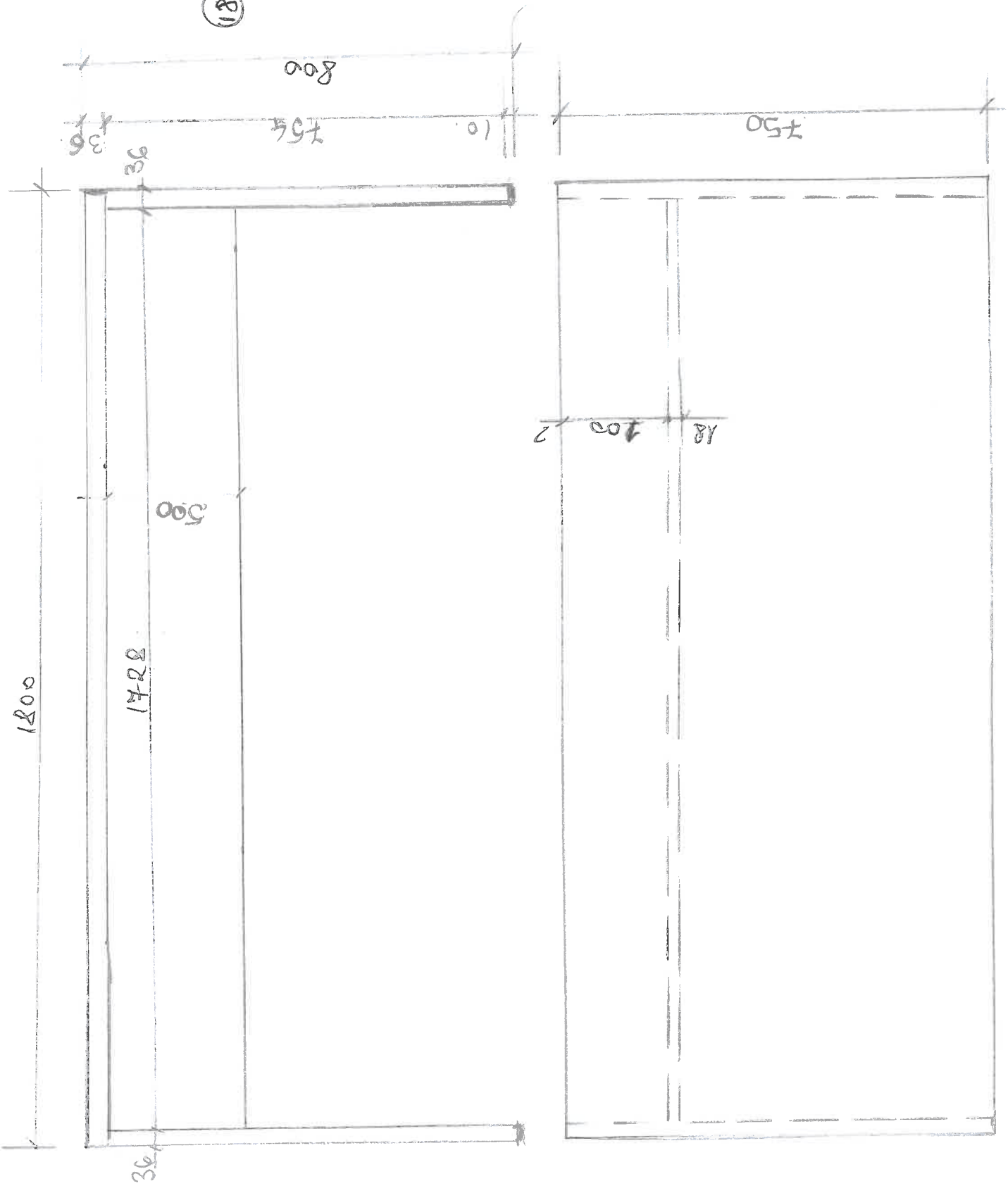


④ MASA STUDENTŮ - 2hmc



36

97



(18) CATEARA - 1700

1800

1728

500

800

754

36

36

750

18

700

2

36