



GSP REGIONAL PRODUCTION FACILITY
IDEALLY SITUATED, STRUCTURED AND
EQUIPPED FOR COMPLEX FABRICATION WORKS
IN THE BLACK SEA.



SHIPYARD FOCUS



**WE ARE THE TOP INTEGRATED
PROJECT PROVIDER IN THE REGION**

**WE EMPLOY OVER 2.6 THOUSAND
SPECIALISTS IN ROMANIA AND OUR
SUBSIDIARIES, INCLUDING MOSCOW.**

**WE ARE A FULL SERVICE COMPANY
SPECIALIZED IN OFFSHORE & ONSHOORE
CONSTRUCTION, BUT ALSO OFFSHORE
DRILLING.**

**WE ARE THE BUILDERS OF Dzhubga
- Lazarevskoye - Sochi EPIC Pipe-lay
STRETCHING OVER 165 KM IN length.**

**WE ARE THE TEAM THAT FABRICATED,
TRANSPORTED AND INSTALLED THE BIGGEST
OFFSHORE JACKET IN THE BLACK SEA, IN
OFFSHORE TURKEY.**

**WE OWN AND OPERATE COMPLEX
OPERATIONAL BASES IN CONSTANTA PORT,
INCLUDING OUR OWN SHIPYARD, IN AGIGEA.**



1 MAI PLOIESTI

Centennial experience in building oil and gas equipments.

- Heavy machinery workshop
- Highly specialised parts builds
- Blasting & painting workshop



MIDIA NAVODARI

GSP Logistics base of ops

- Helicopters operation facility & maintenance
- Cranes, lifting equipment and heavy trucks
- Welding shop facility for pipeline projects
- General storage and lay down area
- Workshops/ Warehouses & testing facilities
- Other facilities for casing, tubulars, machine shops & pipe coating



BERTH 34 CONSTANTA

- Operational and training base
- Drilling & Well Ctrl Training
 - HSE Courses
 - OPITO BOSIET/HUET/FOET
 - STCW – IMO courses



GSP SHIPYARD AGIGEA

End to end solutions in steel fabrication services

- Jackets
- Decks / Topsides
- Bridges
- Tripods
- Piles
- Floating Structures
- Offshore constructions and modules
- Piping and facility installation.
- Offshore and onshore heavy lift equipment
- 350.000 sqm storage
- excellent connectivity:

Black Sea, Danube, European Railway and Freeway
• +10.000 T, annual capacity

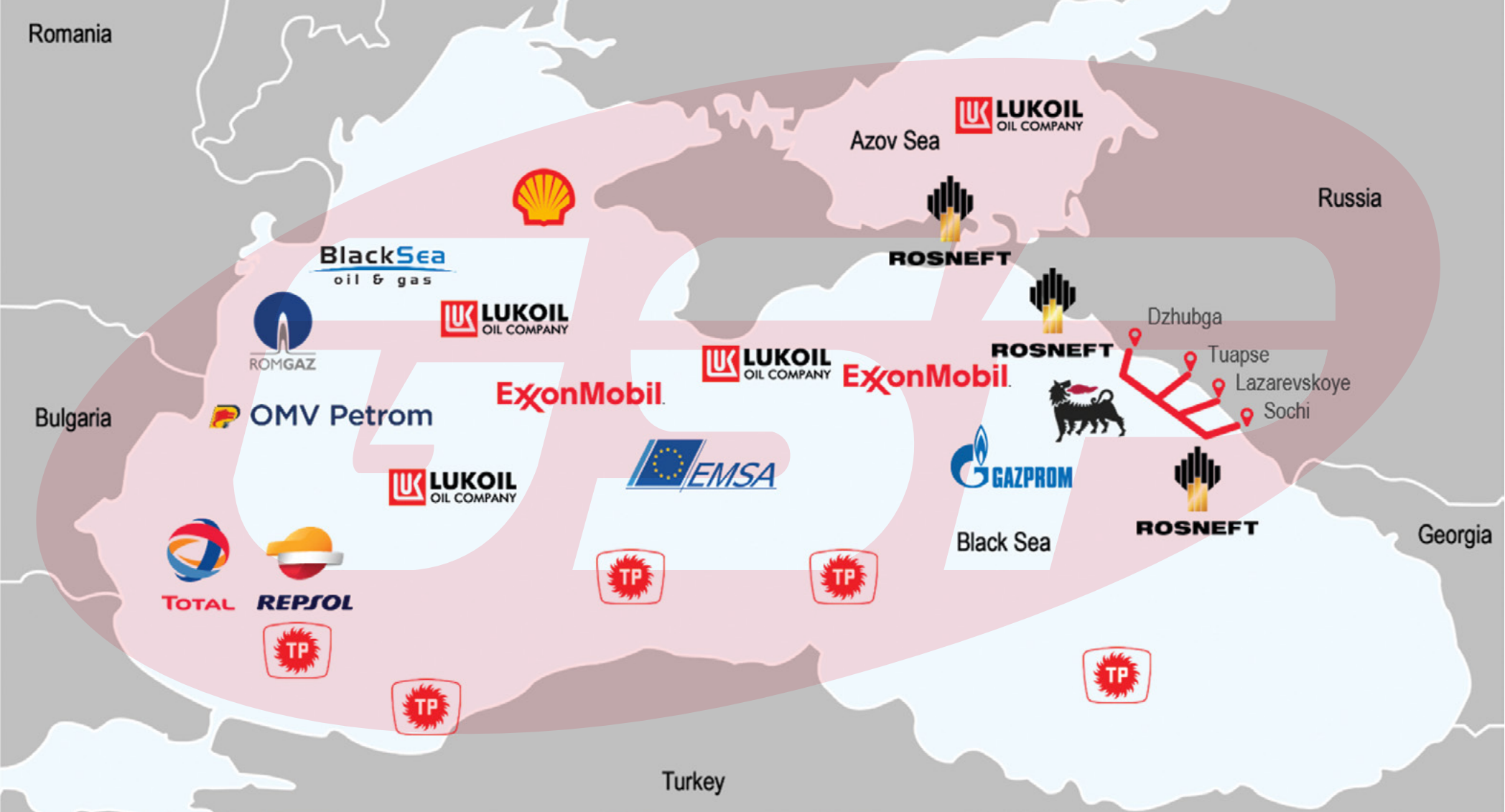


We operate a complex structure of bases, each with it's own capabilities and objectives. Our operational structures are integrated in an intelligent work-system, that provides a robust support network for our clients.

BLACK SEA PROJECTS

We have the know-how, the means, the will and the assets to achieve any goal in the offshore business.

Since our foundation, in 2003, we improved, we grew, and became the biggest offshore construction company in the Black Sea region.





WHAT WE DO

SHIPYARD



▶ End to end solutions in steel **fabrication** services having the full capacity to deliver

- » Jackets
- » Decks/Topsides
- » Bridges
- » Tripods
- » Piles
- » Floating Structures
- » Piles
- » Floating Structures
- » Offshore constructions and modules
- » Piping and facility installation
- » Pipeline/ Appurtenances and other offshore constructions and modules

▶ Highly specialized services for shipbuilding projects and repairs including

- » New builds & Upgrades
- » Reactivation/Conversion
- » Green scrapping
- » Welding & fabrication works
- » Naval architecture services
- » Piping, machining, hydraulics
- » Assembling
- » Fire protection
- » Mechanical work
- » Life boats and davits
- » Project management
- » High resistant industrial coatings
- » Marine engineering
- » Electrical and electronics
- » Boiler making





SHIPYARD



CAPABILITIES

GSP Shipyard is specialized in procurement, engineering, fabrication, and project management for offshore constructions.

We own the infrastructure to support offshore construction with a complex steelwork facility endowed with an extensive fleet of heavy lift cranes.

The facility includes a multipurpose workshop and a heavy duty open platform, as well as the necessary infrastructure and utilities.

STATS

ACCESS TO OPEN SEA	Distance to open water	6 km
	Minimum channel water depth	7 m
	Minimum channel width	160 m
	Height restrictions	None
	Tidal range	Negligible
STEEL FABRICATION AREA	Crushed stone pavement area	66,000 m ²
	Pile reinforced area	3,600 m ²
	Concrete pavement	13,500 m ²
CONSTRUCTION & ASSEMBLY HALL	Newly built yard quarter	950 m ²
	Production area	5,750 m ²
	Gantries	2 x (20 + 5) ton

- ISO & ISPS certified port facilities
- Skilled & certified manpower
- Heavylift & high speed cranes, up to 4400T
- Multipurpose workshops and heavy duty platforms
- Complex steelwork facility





SHIPYARD

Heavy Lift Equipment

Crawler cranes

- 1 x LiebherrLR1750 (750 ton)
- 3 x LiebherrLR1400 (400 ton)
- 5 x LiebherrLR1300 (300 ton)
- 5 x LiebherrLR1280 (280 ton)
- 5 x LiebherrLR1250 (250 ton)
- 5 x LiebherrLR1200 (200 ton)
- 2 x LiebherrLR1100 (100 ton)

Mobile Road Cranes

- 1 x LiebherrLTM 1030 (30 ton)
- 2 x LiebherrLTM 1070 (70 ton)
- 1 x LiebherrLGD 1550 (550 ton)
- 1 x Terex A 300 (30 ton)
- 5 x Terex RT1075 (75 ton)
- 3 x Terex RT100 (90 ton)
- 1 x MDK 504 (50 ton)

Arial Lift

- 1 x Self Propelled Arial Lift TEREX -TB 60
- 1 x Self Propelled Arial Lift TEREX -TB 85
- 1 x Self Propelled Arial Lift GROVE -AMZ

Forklifts

- 1 x Forklift KOMATSU (3,5 ton)
- 1 x Forklift TOYOTA (3,5 ton)
- 1 x Forklift KALMAR 4,5 (4,5 ton)
- 2 x Forklift KALMAR -14T (14 ton)
- 1 x Forklift SMV20T (20 ton)
- 1 x Forklift BALKANCAR (3,5 ton)
- 1 x Forklift YTO-CPC-D60 (6 ton)

Other equipment

- Bulldozer CATERPILAR
- Backhoe Loader KOMATSU
- AutogrederP&O
- Road Steel wheel Roller-HAMM
- Bridge Crane 3,2TOX13,5M
- Bridge Crane DEMAG
- Saw line machine
- 3 x Welding station (SAW process)
- Fixed drilling machine
- 65 x Portable welding machine
- 3 x Lathe machine
- 10 x Electrical owen
- 40 x Electrodes quiver
- 20 x Mechanical tool kit
- 10 x Electrical tool kit
- 4 x Welding kit

CAPABILITIES



NEW BUILD: GSP BIGFOOT I CONVERSION FROM BARGE TO DP2 DERRICK/PIPE LAY

SELECTED REFERENCES

SHIPTARD

Duties:

Pipelay, heavy lift works.
The pipelay system is based on the single joint S-lay principle.
The barge is capable of installing 6" to 60" diameter pipelines

helideck-Sikorsky S-61N & S-92
with refueling system

Heavy-lift 400 MT offshore crane

200 MT pipelaying capacity

Accommodation: 240 POB

PHASE I



PHASE II



COMPLETED





SHIPYARD

NEW BUILD: GSP BIGFOOT I CONVERSION FROM BARGE TO DP2 DERRICK/PIPE LAY

Works successfully completed at GSP Shipyard

- » Installation of the power generation (5 x Caterpillar 3512B DI-TA 1257kW and 1 x Caterpillar Emergency Generator Set) Ballast system;
- » Installation of two AMCLYDE cranes;
- » Installation of the SAS GOUDA pipe-lay system including the firing line;
- » Installation of an 8 points mooring winch system with 6t anchors;
- » Construction and installation of 240 personnel accommodation facilities.
- » Extension of the operation area up to the sea depth of 300 m;
- » Increase of the maximum diameter of the pipes which the vessel can install up to 48”;
- » Installation of a self propulsion system through DP2 dynamic positioning;
- » Installation the power plant with four 3.5 MW generators;
- » Installation of 6 azimuthal thrusters;
- » Installation of a tensioner which led to the increase of the capacity of the subsea pipes fabrication lines up to 200 tons;
- » Installation of a new stinger: 400 metric tons;
- » Installation of new outrigger: 310 metric tons.



LARGEST JACKET IN THE BLACK SEA - AKCAKOCA OFFSHORE FIELD

SHIPYARD

The template fabrication for the 2nd development stage of the Akcakoca natural gas offshore field, was carried out start-to-end by GSP companies. The EPC phase of the project was developed by GSP Shipyard in Constanta Harbor. The installation and commissioning of facilities were performed by GSP S.A.

Shipyard work:

- » Engineering Procurement Construction (Phase I): 1,515 tons and 101 meters long steel jacket
- » Engineering Procurement Construction (Phase II): 487 tons (894 tons including equipment) double deck steel topside
- » Installation Commissioning: Load out ops and sea fastening for the offshore construction modules





LARGEST JACKET IN THE BLACK SEA - AKCAKOCA OFFSHORE FIELD

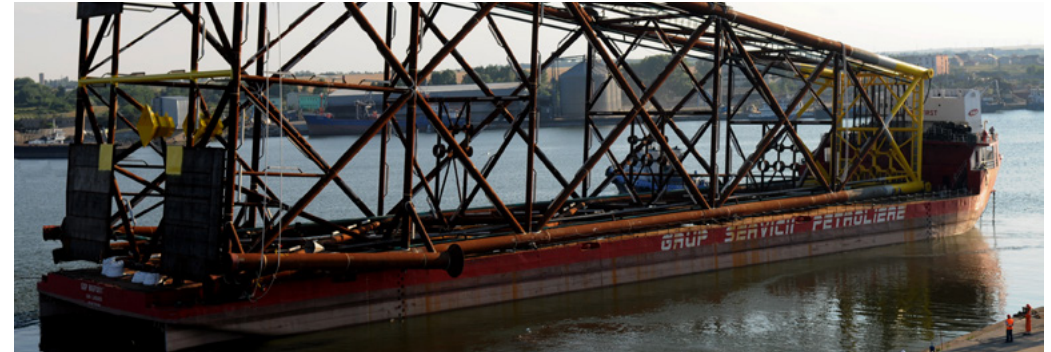
SHIPTYARD

Installation of a 4-legged Jacket over the two pre-drilled wells, AKC-3 and AKC-4 (with vertical depths of 1600 m), and the drilling of three new directional wells, with the self contained modular drilling rig GSP 31 – which is further used for completing and maintaining all five wells.

The platform structure developed for the 95m water depth site supports the topsides facility. The platform structure comprises a four legged X braced template 'jacket' structure and a two level trussed 'deck' structure.

The main function of the platform is to act as a support and protection structure for the wellheads and pipeline risers and to provide means of surface access for well control and maintenance.

A subsea pipeline of 12" and 7 kilometers was installed by GSP Bigfoot 1 and tied-in to the existing offshore pipeline system via a piggable wye connection for transporting the produced gas from the Akcakoca platform to the Cayagzi gas processing plant located onshore near Akcakoca town.





LARGEST FIXED JACKET AND TOPSIDE IN THE ROMANIAN OFFSHORE

SHIPYARD

FIXED STEEL JACKET ENGINEERED & CONSTRUCTED IN OUR SHIPYARD

- >1300 TONS
- 100 m TOTAL HEIGHT
- 69 m BELOW WATER
- 31m ABOVE WATER

SELECTED REFERENCES





LARGEST FIXED JACKET AND TOPSIDE IN THE ROMANIAN OFFSHORE

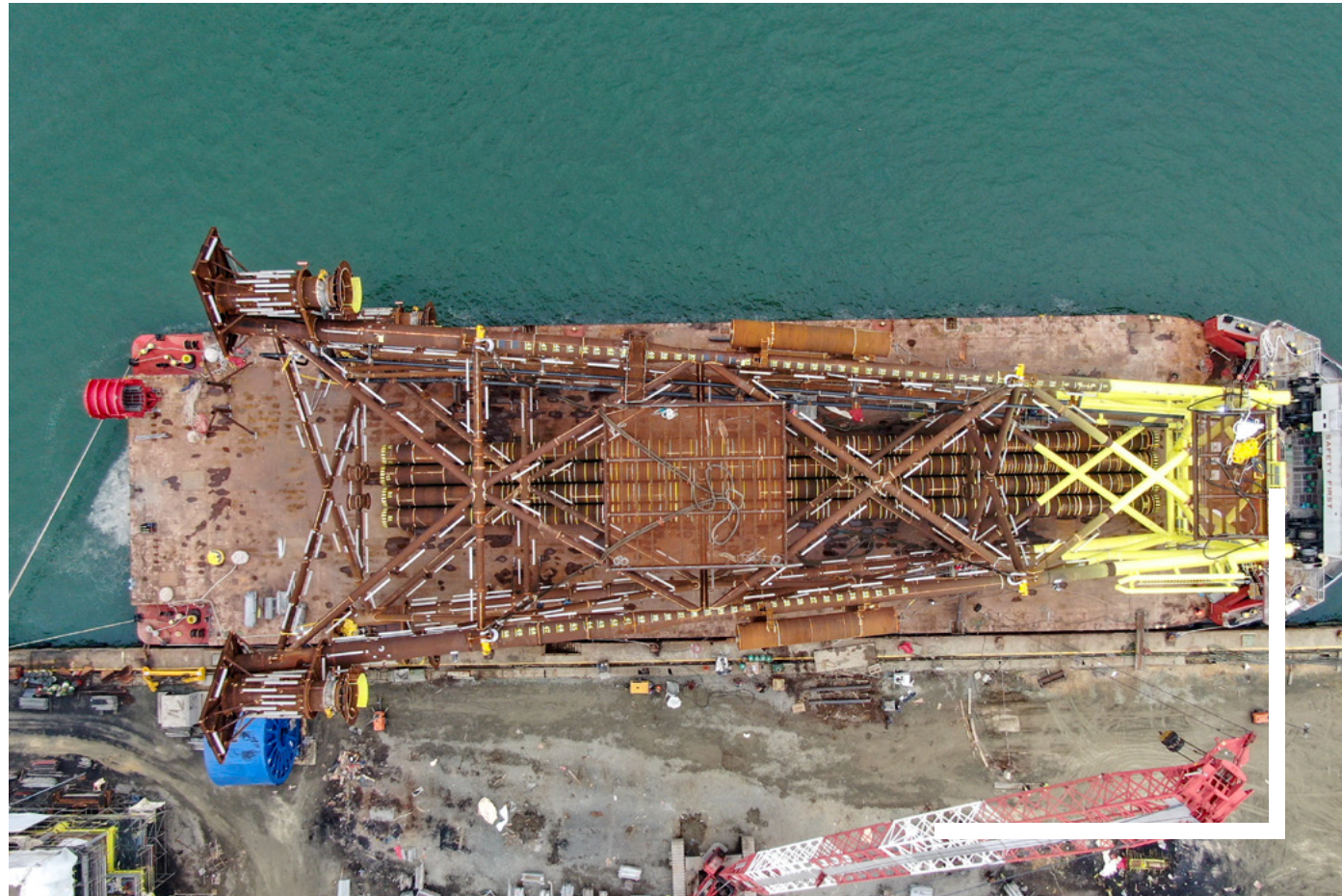
SHIPYARD

SELECTED REFERENCES



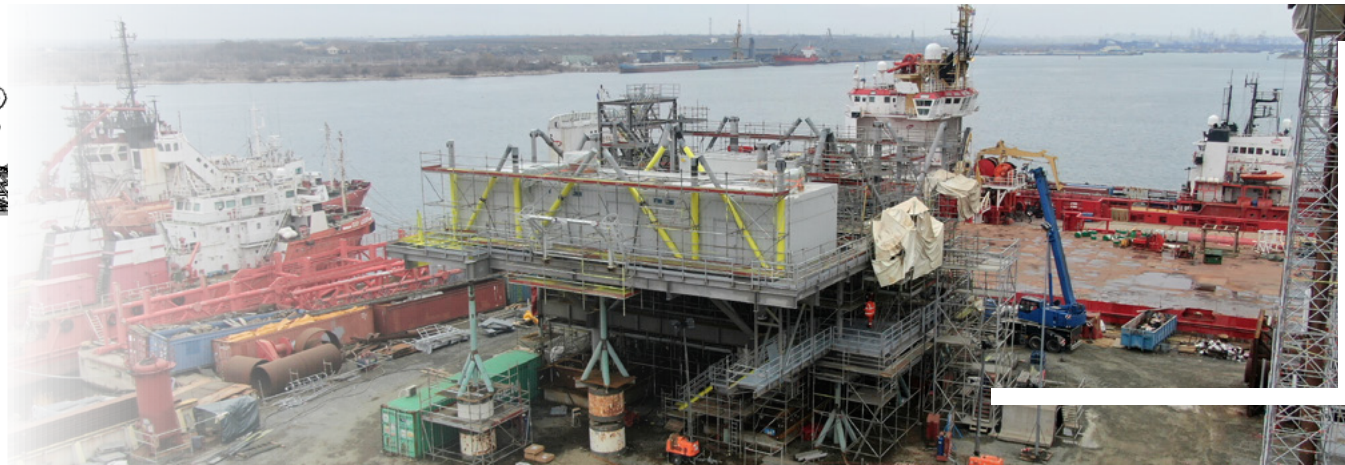
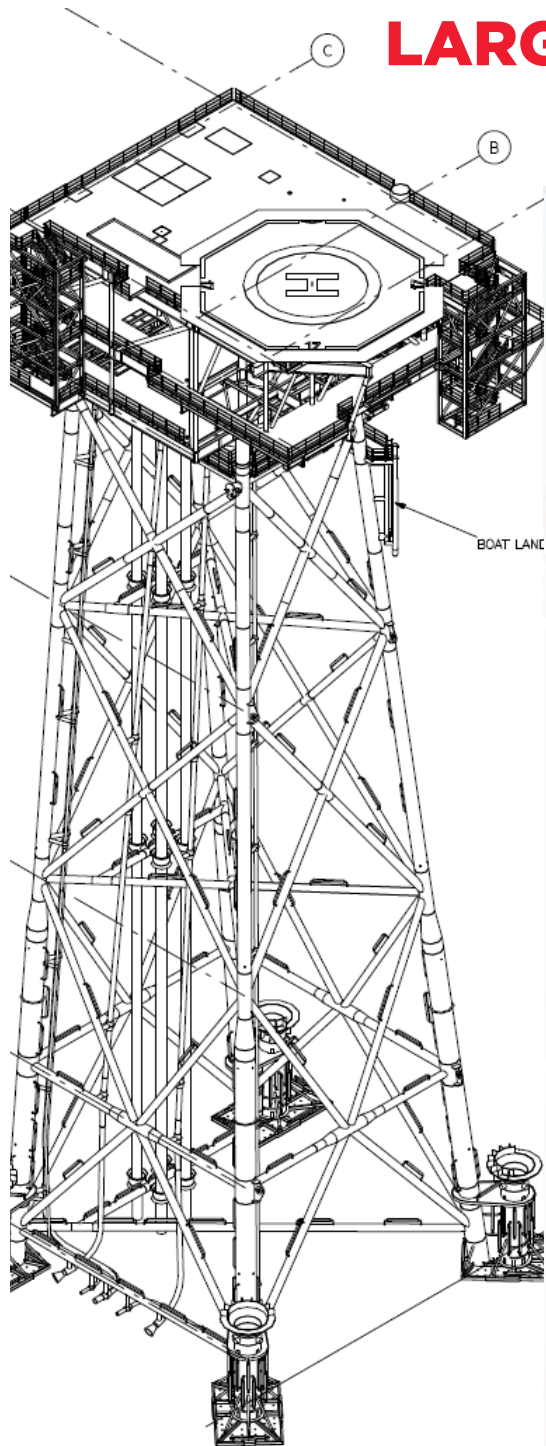
LOAD OUT COMPLETED

- GSP NEPTUN (1800 T CAPACITY SEA CRANE) LIFTED THE JACKET.
- THE JACKET WAS SUCCESSFULLY FASTENED ON GSP BIG-FOOT II





LARGEST FIXED JACKET AND TOPSIDE IN THE ROMANIAN OFFSHORE



PLANNING TO EXECUTION

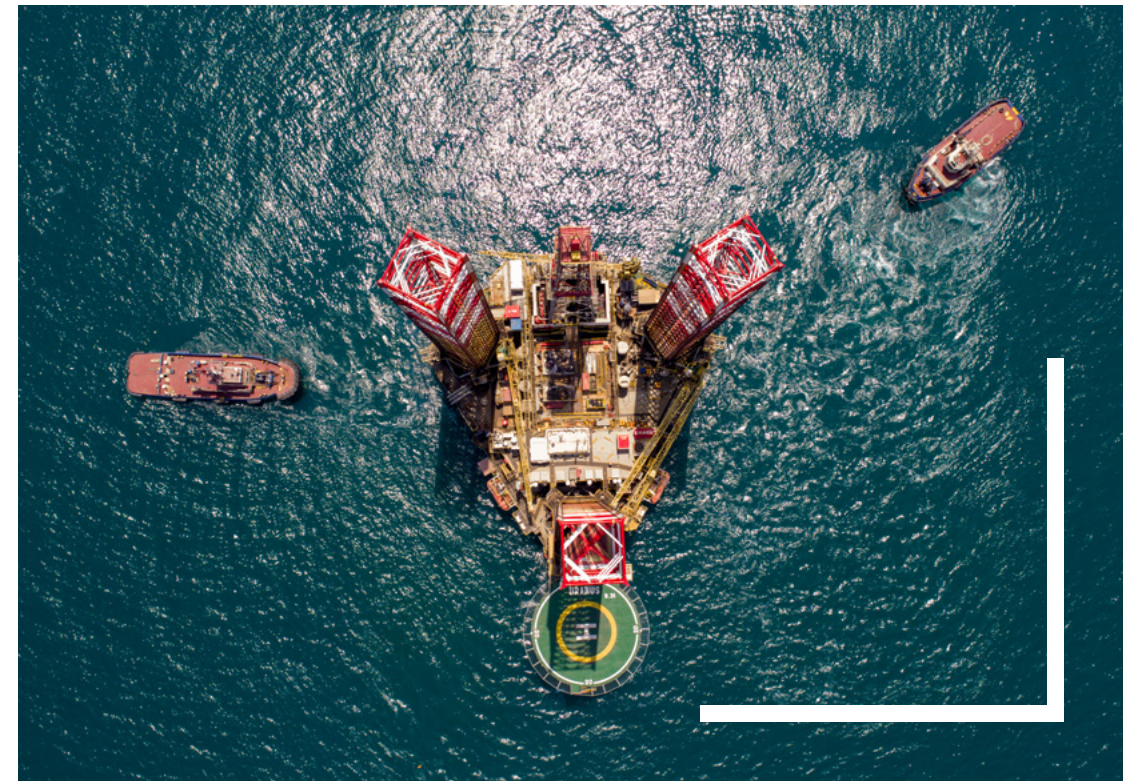
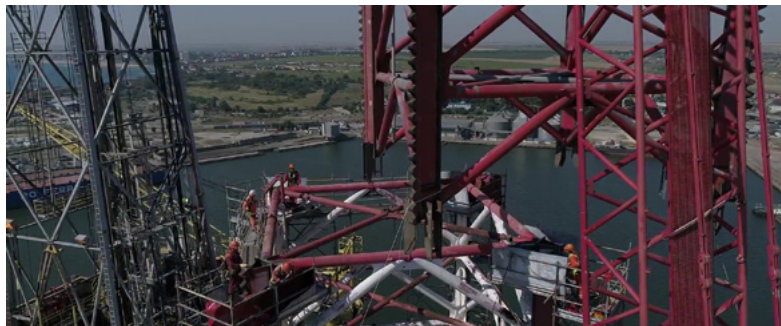


UPGRADE GSP URANUS - 3 LEGGED OFFSHORE OIL RIG

SHIPYARD

WORKS COMPLETED

- » Corroded hull steel replacement ~ 70% – up to 300t
- » Mud pumps installment
- » Superstructure works
- » Drill floor upgrade
- » - New burner boiler installment
- » - Remove and refit of the Legs Upper section – 3



SELECTED REFERENCES

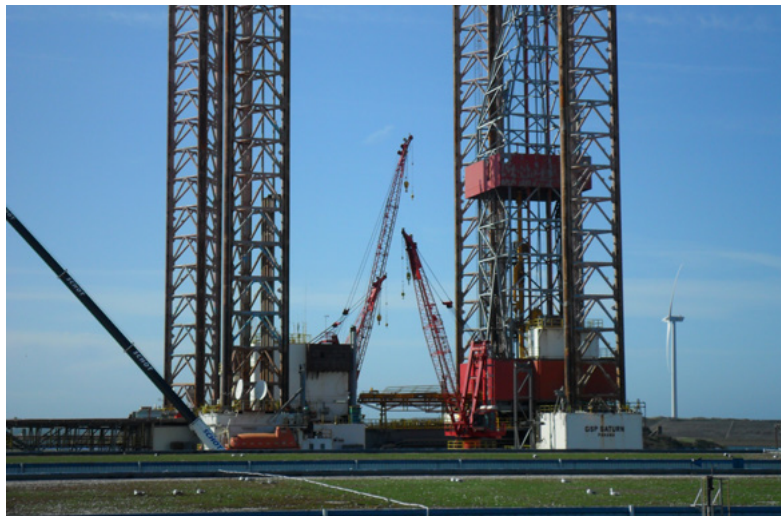


UPGRADE & RECLASSIFICATION GSP SATURN - 4 LEGGED SELF ELEVATING OFFSHORE OIL RIG

SHIPYARD



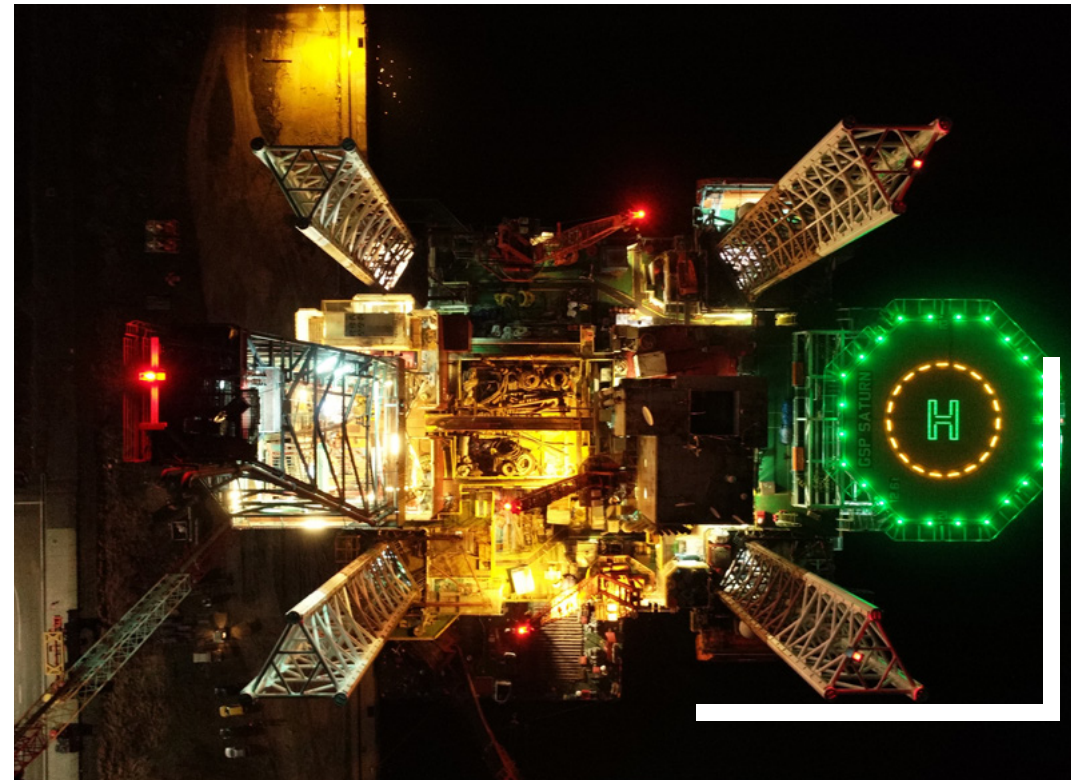
SELECTED REFERENCES



RIG SPECS

Corroded hull steel replacement ~ 70% – up to 300t

- » Design – Sonnat Offshore Company
- » Year built – 1988, rebuilt in 2009
- » Class – ABS , Flag – Panama
- » Max Drill depth 30,000 ft
- » Max Water Depth 300 ft (91m)





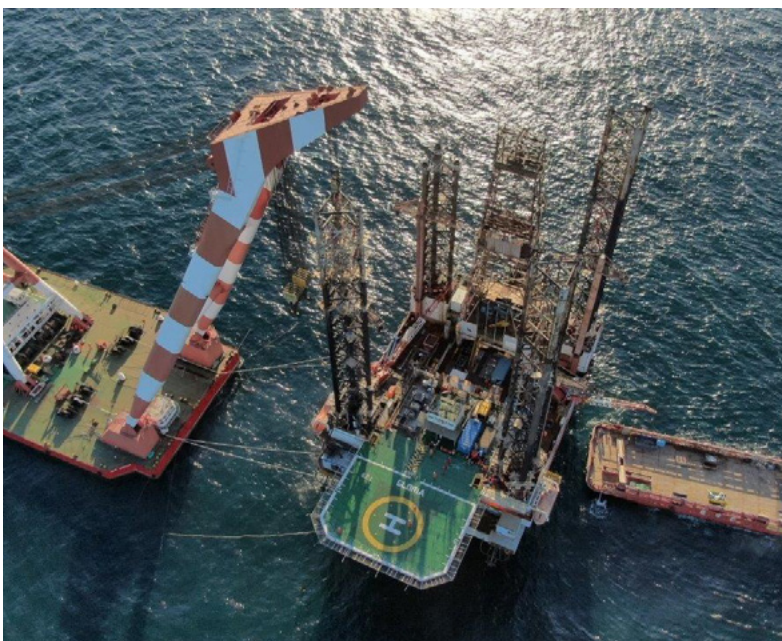
GLORIA RIG DECOMMISSIONING

SHIPYARD



AFTER 40 YEARS OF SERVICE

- » GSP was contracted to decommission one of the first rigs in the Romanian Black Sea offshore.
- » Gloria was decommissioned using GSP Neptun, along with several multipurpose GSP vessels.
- » The decommissioning continued onshore, at our Shipyard facility in Agigea.



SELECTED REFERENCES



FABRICATION OF 4 TENSION BARGES

SHIPTYARD

SELECTED REFERENCES



FABRICATION OF 4 TENSION BARGES

- » GSP Shipyards fabricated, tested and delivered four 14,50 m x 20,00 m x 3,00 m tension barges equipped with a system for tensioning and lock off chain.
- » 153 TONS OF STEEL FABRICATION/EACH
- » Fabricated in 2016
- » The final beneficiary of the works was The Norwegian company Statoil.





GSP PROMETEU RIG - MOPU CONVERSION

SHIPYARD

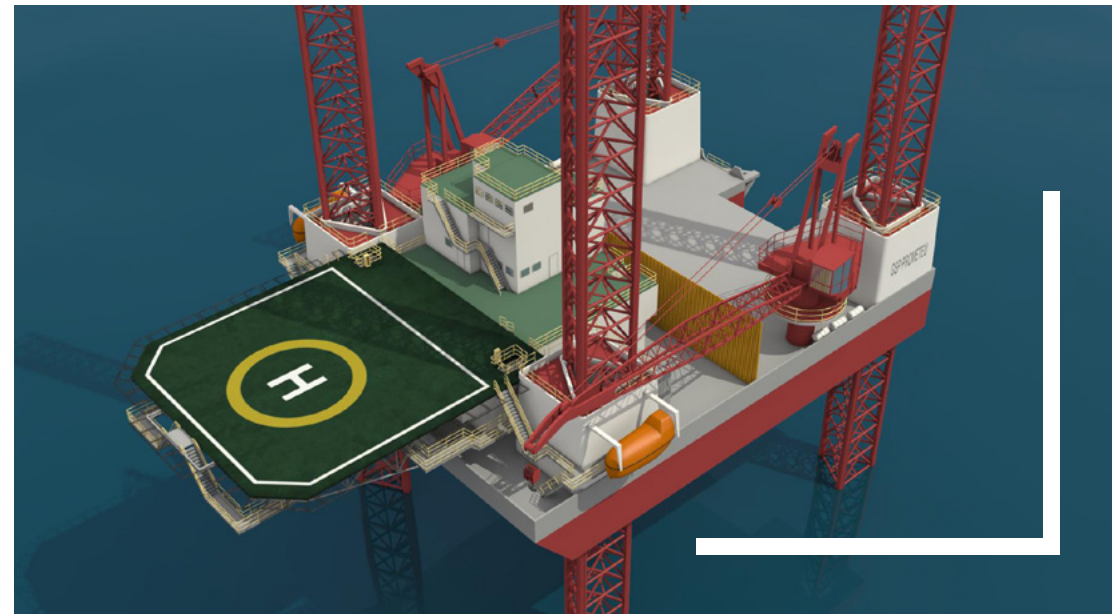
MOPU FEATURES

- » Reduced up-front capital costs
- » Lower installation and abandonment costs
- » Ease of relocation and deployment
- » Phased field development
- » Potential to lease facilities



WORKS

- » 2 off 60mt Offshore Pedestal Crane
- » New Generator Sets: Four (4) new CAT 3516B Offshore Drilling Rig Generator Sets. 1600 KW/ 50 Hz/ 600 V / 1500 RPM.
- » Electrical Systems and Power Supply rework.
- » Main Deck and heli-deck rework.



ONGOING PROJECTS

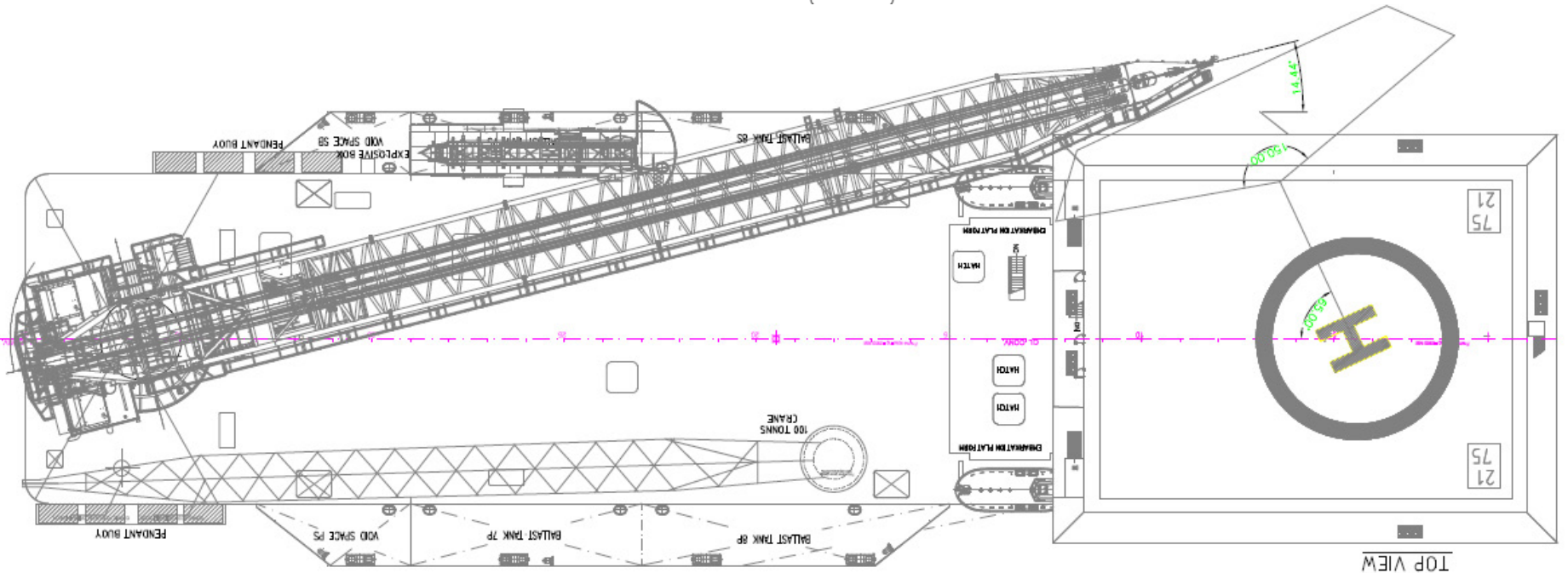
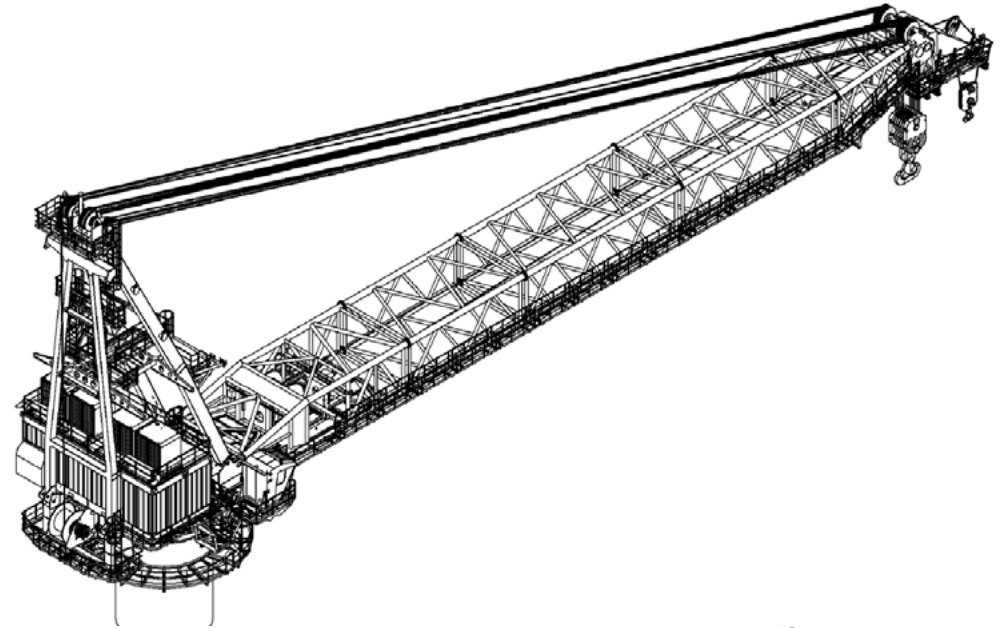


BIG FOOT III - CONVERSION TO DERRICK 500 T BARGE

SHIPTYARD

WORKS

- » Integration of a 400T crane, from Liebherr, Crane Type: BOSS 14000 -500 D LITRONIC
- » New hull structures designed and manufactured.
- » Removal of current 15 t crane.
- » Anchor frame modifications.



ONGOING PROJECTS



PROJECT EPSILON - JACKET & TOPSIDE FABRICATION

SHIPYARD

WORKS

Fabrication, transport and installation:

- » Lambda platform
- » 800 T, 43 m jacket;
- » 600 T topside, 11 m jacket.
- » Subsea drilling template



ONGOING PROJECTS



SHIPYARD

EXTENSION PLANS

- » GSP Shipyards will double its capacity in the near future.
- » Plans to extend our facility and technical capabilities to support double the actual workload and tonnage are underway.
- » Future development area: 59,370 sqm. The facility will almost double in size.





SHIPYARD



RECAP

- » GSP Shipyard is an integral part of GSP Holding, the largest offshore construction and drilling provider in the Black Sea Region.
- » At peak load, our dedicated facility can deliver over 1.000.000 man hours of highly specialized engineering, fabrication and installation work.
- » Total facility area 47 100 sq. m.
- » Access to the largest sea crane in the Black Sea GSP NEPTUN (1.800 T).
- » Immense onshore lifting capacity.
- » Dedicated teams of experienced specialists capable of delivering the best solutions for your **Engineering, Procurement, Construction and Installation** needs.
- » GSP is the team behind the complex EPCI project: DLS, connecting two important regions via submerged gas pipelines (165 km length).
- » GSP Shipyard fabricated the largest offshore steel jacket in the Black Sea, which was later transported and installed by GSP Holding in Akcakoca.
- » We have an impeccable HSEQ track record. All operations are safe and professionally managed.

CONTACT

Luxembourg

Address: 4, An Huemes, L-6255, Zittig, Luxembourg
E-mail: office@gspholding.com

Romania – Constanta

Address: Constanta Port, Berth 34, 900900, Constanta
Tel: 0040 241 555 255; 0040 241 555 256
Fax: 0040 241 555 257
E-mail: office@gspoffshore.com

Romania – Bucharest

Address: 97 Pipera-Tunari, Voluntari, 077190, Ilfov
Tel: 00 40 21 308 02 00; 0040 372 080 200
Fax: 0040 21 308 02 02
Email: office@gspholding.com

LET'S WORK TOGETHER

WE ARE

GSP

